

Precision Thread Gage Catalog

STEINER

888-327-1949

www.steinertechnologies.com
180 Perinton Pkwy Fairport NY 14450
Sales@steinertechnologies.com

585-425-5910

Precision Thread Gages

General Information

JBO Thread Gages - a concept for quality and wear resistance	Page 2
Overview Precision Thread Gages	Page 3
Special length on GO/NO GO Thread Plug Gages	Page 4
General Information MultiCheck / eMuliCheck	Page 5
"FAST LINE" express production	Page 6

M ISO metric thread	Page 7
MF ISO metric fine thread	Page 16

G Whitworth pipe thread	Page 61
BSW British Standard Whitworth thread	Page 65
BSF British Standard Whitworth fine thread	Page 66
R Tapered Whitworth pipe thread	Page 67
Pg Steel conduit thread	Page 69
MF-EL Electrical conduit thread	Page 70

UNC Unified national coarse thread	Page 71
UNF Unified national fine thread	Page 73
UNEF Unified national extra fine thread	Page 75
UN/UNS Unified national thread, Unified national special thread	Page 76
UNJC UNJC Unified national coarse thread	Page 77
UNJF UNJF Unified national fine thread	Page 78

NPT American Standard taper pipe thread	Page 79
NPTF American Standard taper pipe thread	Page 80
Tr ISO metric trapezoidal thread	Page 81
EG (STI) Threads for wire inserts M/MF/UNC/UNF	Page 82

JBO Thread Gages – A Concept for Quality and Wear Resistance

Excellent wear behavior due to supreme surface finish of thread flanks and high hardness ≥ 62 HRC for long gage life.

Repeated tempering after the annealing process guarantees high form stability and dimensional stability.

Gages are produced to the reduced tolerance wherever permitted by the overall gage tolerance.

Uncertainty of measuring

Reduced tolerance (region of conformity)

Uncertainty of measuring

Thread gage tolerance

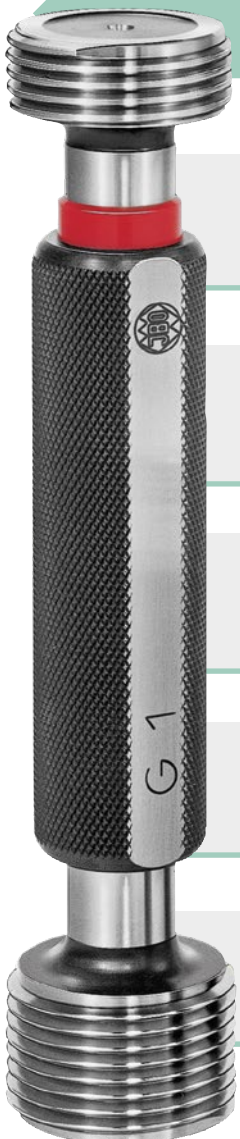
Large stocks covering more than 10,000 different thread dimensions and tolerances for quick delivery.

European market leader with our exceptional stock holding and variety of thread sizes.

Complete range of gages covering all kinds of threads from 0.5 - 300 mm diameter.

Gages are supplied in individual packing for permanent protection.

Calibration certificate on request.



Precision Thread Gages

LD



LD GO/NO GO thread plug gage, dimensions according DIN 2280 till major-Ø 40 mm

LD-DLC GO/NO GO thread plug gage, GO side DLC coated

GD



GO thread plug gage
Dimensions according DIN 2281-1 above major-Ø 40 mm DIN 2281-2

AD



NO GO thread plug gage
dimensions according DIN 2283-1 above major-Ø 40 mm DIN 2283-2

LD



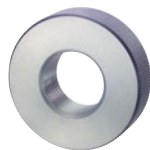
GO/NO GO thread plug gage conical with step limit

KD



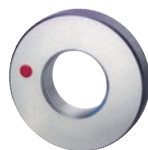
Thread-coordinate gage rod
Determination of position and angularity of the thread via 3D measuring machine

GR



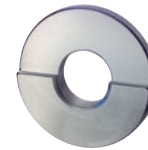
GO thread ring gage
Dimensions according DIN 2285-1

AR



NO GO thread ring gage
Dimensions according DIN 2299-1

LR



GO/NO GO thread ring gage for tapered thread with step limit

Thread Gages sets for ISO metric thread according DIN 13



Part # 563738

GO thread plug gages M3, M4, M5, M6, M8, M10, M12 tolerance 6H with DLC coating HV 0.05 > 5000

Price on request



Part # 239334

GO thread ring gages M3, M4, M5, M6, M8, M10, M12 tolerance 6g with DLC coating HV 0.05 > 5000

Price on request

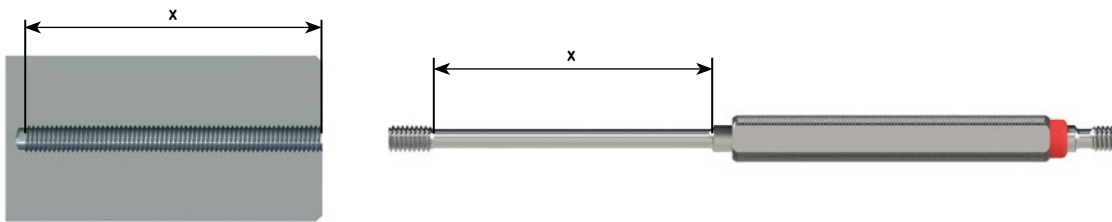
Special length on GO/NO GO Thread Plug Gages

Measuring length

The GO thread plug gage is extended and therefore suitable for a measuring length x . For the NO GO side a standard NO GO thread plug gage is appropriate. The thread length of the GO thread plug and the NO GO thread plug is corresponding to the standard.

Application

Required for overlong threads in the workpiece.

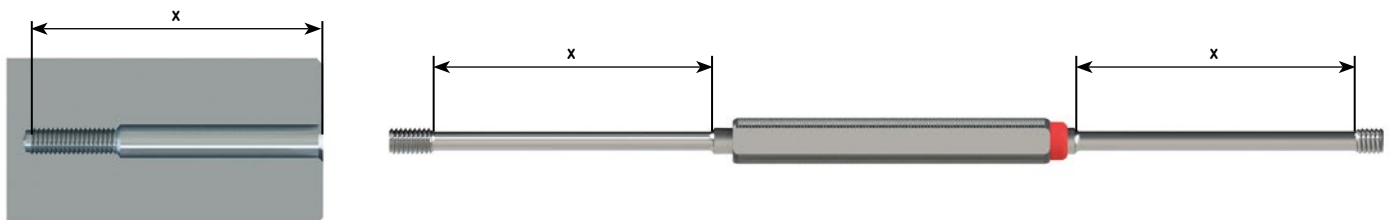


Measuring depth

The GO thread plug gage and the NO GO thread plug gage are extended and therefore both are suitable for a measuring depth x . The thread length of the GO thread plug gage and the NO GO thread plug gage is corresponding to the standard.

Application

Required for recessed threads in the workpiece.

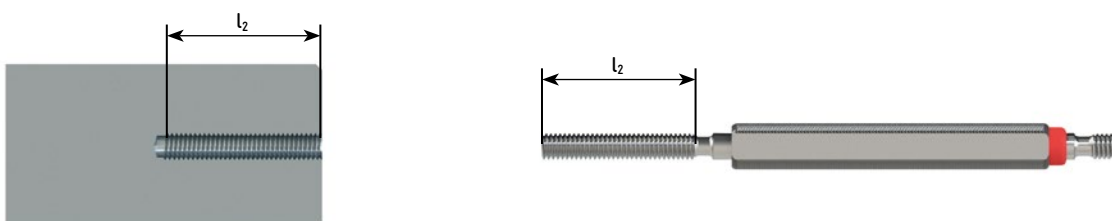


Thread length

The thread length of the GO thread plug gage is extended on the length l_2 . For the NO GO side a standard NO GO thread plug gage is appropriate.

Application

Required for checking e.g. the pitch delay on a long thread in a workpiece.



MultiCheck

MCS

MultiCheck Scale

- accuracy of reading 0.5 mm



MCN

MultiCheck Vernier

- accuracy of reading 0.1 mm



MCD

MultiCheck Digital

- accuracy of reading 0.01 mm



MCDW

MultiCheck Digital Wireless

- digital display with integrated wireless module
- accuracy of reading 0.01 mm



WMCD

MultiCheck Digital with changeable gage inserts

- accuracy of reading 0.01 mm



eMC

eMultiCheck

- with electronically controlled drive
- accuracy of reading 0.01 mm
- digital output for measured value transmission



eMCW

eMultiCheck Wireless

- with electronically controlled drive
- digital display with integrated wireless module
- accuracy of reading 0.01 mm



« FAST LINE »



DELIVERY WITHIN 2 WEEKS



Our "FAST LINE" express production is now possible for thread plug gages and thread ring gages. Delivery takes place within 2 working weeks. The express surcharge for this is charged per order item, see price list. Please mark inquiries and orders in the subject "FAST LINE" and send them to:

sales@steinertechnologies.com



Our "FAST LINE" program includes thread plug gages and thread ring gages in special tolerances and intermediate dimensions, based on cylindrical thread types, which are listed here in the catalogue. Up to 3 pieces are available per article, in the diameter range from 3 - 100 mm and with pitches from P 0.5 - 4 mm. Except trapezoidal threads.



Precision Thread Gages

ISO metric thread DIN 13

Gage dimensions acc. DIN ISO 1502



LD

LD-DLC



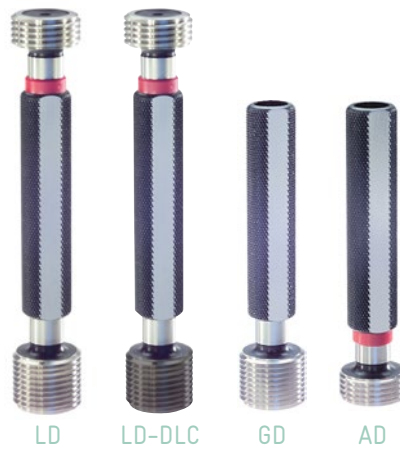
ORDER-CODE →		LD	LD-6G	LD-4H	LD-DLC	LD-6G-DLC	LD-LH	LD-6G-LH
d	P mm	6H	6G	4H	6H	6G	6H Left Hand	6G Left Hand
		Plug gage ≤ M 0,9 Tol. 4H DIN 14 M 1-M 1,4 Tol. 5H	Plug gage	Plug gage	Plug gage Plug gage G0: DLC hardness HV 0.05 > 5000	Plug gage Plug gage G0: DLC hardness HV 0.05 > 5000	left hand Plug gage ≤ M 1,4 Tol. 5H	left hand Plug gage
↓								
		Part #	Part #	Part #	Part #	Part #	Part #	Part #
M 0,5	0,125	524336 ○						
M 0,6	0,15	527515 ○						
M 0,7	0,175	527516 ○						
M 0,8	0,2	524340 ○						
M 0,9	0,225	527517 ○						
M 1*	0,25	511618 ●		517091 ●			517151 ●	
M 1,1*	0,25	511621 ●		517158 ○			517152 ●	
M 1,2*	0,25	511623 ●		511624 ●			514484 ●	
M 1,4*	0,3	511629 ●		511630 ●			514485 ●	
M 1,6	0,35	511636 ●	511639 ●	511637 ●	514136 ●		513913 ●	
M 1,7	0,35	511642 ●						
M 1,8	0,35	511644 ●	511645 ●	514527 ●			517011 ●	
M 2	0,4	511859 ●	511862 ●	511860 ●	513460 ●		511867 ●	
M 2,2	0,45	511873 ●	511876 ●	511874 ●			514486 ●	
M 2,3	0,4	511879 ●						
M 2,5	0,45	511883 ●	511886 ●	511884 ●	512756 ●	512757 ●	511888 ●	
M 2,6	0,45	511894 ●	511897 ○					
M 3	0,5	512036 ●	512043 ●	512039 ●	512777 ●	512778 ●	512049 ●	514584 ○
M 3,5	0,6	512059 ●	512064 ●	512060 ●			512066 ●	
M 4	0,7	512177 ●	512182 ●	512179 ●	512788 ●	512789 ●	512186 ●	512187 ○
M 4,5	0,75	512202 ●	512203 ●	514587 ○			512204 ●	
M 5	0,8	512218 ●	512225 ●	512221 ●	512792 ●	512793 ●	512231 ●	512232 ●
M 6	1	512252 ●	512259 ●	512256 ●	512796 ●	512797 ●	512268 ●	512269 ●
M 7	1	512286 ●	512288 ●	512287 ●	512800 ●		512290 ●	516976 ○
M 8	1,25	512305 ●	512311 ●	512307 ●	512801 ●	512802 ●	512318 ●	512319 ●
M 9	1,25	512345 ●	512347 ●	512346 ○			512959 ●	
M 10	1,5	511646 ●	511650 ●	511648 ●	512731 ●	512732 ●	511654 ●	511655 ●
M 11	1,5	511679 ●	511680 ●	514214 ○			514583 ●	
M 12	1,75	511689 ●	511693 ●	511691 ●	512737 ●	512738 ●	511697 ●	511698 ●

* tolerance 6H on request

Precision Thread Gages

ISO metric thread DIN 13

Gage dimensions acc. DIN ISO 1502



ORDER-CODE →		LD	LD-6G	LD-4H	LD-DLC	LD-6G-DLC	LD-LH	LD-6G-LH
d	P mm	6H	6G	4H	6H	6G	6H Left Hand	6G Left Hand
		Plug gage	Plug gage	Plug gage	Plug gage GO: DLC hardness HV 0.05 > 5000	Plug gage GO: DLC hardness HV 0.05 > 5000	left hand Plug gage	left hand Plug gage
↓								
		Part #	Part #	Part #	Part #	Part #	Part #	Part #
M 14	2	511730 ●	511733 ●	511732 ●	512744 ●		511735 ●	514055 ○
M 16	2	511776 ●	511780 ●	511778 ●	512749 ●	516828 ●	511784 ●	514056 ●
M 18	2,5	511820 ●	511822 ●	511821 ●			511823 ●	511824 ○
M 20	2,5	511902 ●	511904 ●	516781 ●	512758 ●		511908 ●	513902 ●
M 22	2,5	511934 ●	511935 ●				511938 ●	
M 24	3	511965 ●	511966 ●				511969 ●	516995 ●
M 27	3	512005 ●	512006 ●				512007 ●	517816 ○
M 30	3,5	512075 ●	512076 ●				512077 ●	513995 ●
M 33	3,5	512108 ●	512109 ●				514298 ●	
M 36	4	512144 ●	512145 ●				512146 ●	
M 39	4	512166 ●	512167 ●				514299 ●	

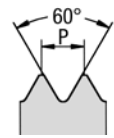
ORDER-CODE →		GD	AD	GD-LH	AD-LH	
d	P mm	6H	6H	6H Left Hand	6H Left Hand	
		GO plug gage	NO GO plug gage	left hand GO plug gage	left hand NO GO plug gage	
↓						
		Part #	Part #	Part #	Part #	
M 42	4,5	511110 ●	510383 ●	514598 ●	514600 ●	
M 45	4,5	511122 ●	510395 ●	513679 ●	516961 ●	
M 48	5	511136 ●	510408 ●	511137 ●	510409 ●	
M 52	5	511174 ●	510444 ●	514599 ●	517178 ●	
M 56	5,5	511187 ●	510457 ●			
M 60	5,5	511211 ●	510482 ●			
M 64	6	511218 ●	510492 ●			
M 68	6	513504 ●	513505 ●			

Precision Thread Gages

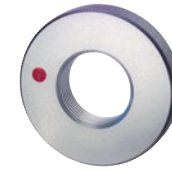
ISO metric thread DIN 13

Gage dimensions acc. DIN ISO 1502

M



GR

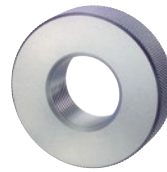


AR

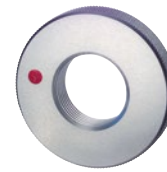
ORDER-CODE →		GR	AR	GR-6e	AR-6e	GR-6h	AR-6h	
d	P mm	6g	6g	6e	6e	6h	6h	
		GO ring gage	NO GO ring gage	GO ring gage	NO GO ring gage	GO ring gage	NO GO ring gage	
		≤ M 1,4 Tol. 6h	≤ M 1,4 Tol. 6h					
↓								
		Part #	Part #	Part #	Part #	Part #	Part #	
M 1*	0,25	501426 ●	500131 ●					* tolerance 6g on request
M 1,1*	0,25	501430 ●	500135 ●					
M 1,2*	0,25	501431 ●	500136 ●			see column 1	see column 2	
M 1,4*	0,3	501434 ●	500139 ●					
M 1,6	0,35	501441 ●	500146 ●	501443 ●	500148 ●	501444 ●	500149 ●	
M 1,7	0,35	501446 ●	500151 ●					
M 1,8	0,35	501448 ●	500154 ●	504215 ○	520148 ○	501450 ●	500156 ●	
M 2	0,4	501700 ●	500404 ●	501704 ●	500409 ●	501705 ●	500410 ●	
M 2,2	0,45	501714 ●	500419 ●	501715 ●	500420 ●	506050 ●	506051 ●	
M 2,3	0,4	501720 ●	500425 ●					
M 2,5	0,45	501724 ●	500429 ●	501728 ●	500432 ●	501729 ●	500433 ●	
M 2,6	0,45	501739 ●	500441 ●			501743 ○	500445 ○	
M 3	0,5	501903 ●	500596 ●	501906 ●	500600 ●	501908 ●	500602 ●	
M 3,5	0,6	501919 ●	500611 ●	501921 ●	500613 ●	501923 ●	500614 ●	
M 4	0,7	502047 ●	500734 ●	502051 ●	500736 ●	502052 ●	500737 ●	
M 4,5	0,75	502069 ●	500752 ●	502071 ○	500754 ○	503374 ○	500755 ○	
M 5	0,8	502138 ●	500822 ●	502143 ●	500826 ●	502145 ●	500828 ●	
M 6	1	502214 ●	500896 ●	502218 ●	500900 ●	502220 ●	500901 ●	
M 7	1	502271 ●	500948 ●	502272 ●	500949 ●	502273 ●	500950 ●	
M 8	1,25	502301 ●	500980 ●	502305 ●	500984 ●	502306 ●	500985 ●	
M 9	1,25	502347 ●	501024 ●	502956 ●	502957 ●	502349 ●	504251 ●	
M 10	1,5	501452 ●	500158 ●	501456 ●	500162 ●	501457 ●	500164 ●	
M 11	1,5	501492 ●	500201 ●	501494 ●	500202 ●	501495 ●	500203 ●	
M 12	1,75	501512 ●	500218 ●	501517 ●	500221 ●	501518 ●	500223 ●	
M 14	2	501572 ●	500277 ●	501574 ●	500279 ●	501575 ●	500280 ●	
M 16	2	501623 ●	500327 ●	501626 ●	500331 ●	501627 ●	500333 ●	
M 18	2,5	501663 ●	500370 ●	501664 ●	500371 ●	501665 ●	500372 ●	
M 20	2,5	501748 ●	500447 ●	501751 ●	500452 ●	501752 ●	500453 ●	
M 22	2,5	501782 ●	500479 ●	501783 ●	500480 ●	501784 ●	500481 ●	
M 24	3	501815 ●	500508 ●	501817 ●	500511 ●	501818 ●	500512 ●	
M 27	3	501868 ●	500559 ●	501869 ●	500560 ●	501870 ●	500561 ●	

Precision Thread Gages

ISO metric thread DIN 13
Gage dimensions acc. DIN ISO 1502



GR

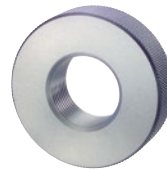


AR

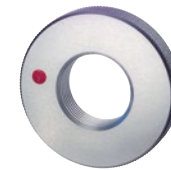
ORDER-CODE →		GR-4h	AR-4h	GR-LH	AR-LH	GR-6e-LH	AR-6e-LH		
d	P mm	4h GO ring gage	4h NO GO ring gage	6g Left Hand left hand GO ring gage ≤ M 1,4 Tol. 6h	6g Left Hand left hand NO GO ring gage ≤ M 1,4 Tol. 6h	6e Left Hand left hand GO ring gage	6e Left Hand left hand NO GO ring gage		
↓									
		Part #	Part #	Part #	Part #	Part #	Part #		
M 1	0,25	501427 ●	500132 ●	506035 ○	506028 ○				
M 1,1	0,25	506034 ●	506046 ●	506036 ○	506029 ○				
M 1,2	0,25	501432 ●	500137 ●	506037 ○	506030 ○				
M 1,4	0,3	501435 ●	500140 ●	506038 ●	506031 ●				
M 1,6	0,35	501442 ●	500147 ●	505880 ●	505436 ●				
M 1,7	0,35								
M 1,8	0,35	501449 ●	500155 ●	506040 ○	506033 ○				
M 2	0,4	501702 ●	500407 ●	501707 ●	502739 ●				
M 2,2	0,45	503906 ●	503923 ●	506045 ○	505461 ○				
M 2,3	0,4								
M 2,5	0,45	501726 ●	500430 ●	501730 ●	500434 ●				
M 2,6	0,45								
M 3	0,5	501905 ●	500598 ●	501910 ●	500604 ●				
M 3,5	0,6	501920 ●	500612 ●	501924 ●	500615 ●				
M 4	0,7	502049 ●	500735 ●	502053 ●	500739 ●	503914 ●	503918 ●		
M 4,5	0,75	502070 ○	500753 ○	502072 ○	500756 ○				
M 5	0,8	502141 ●	500824 ●	502147 ●	500831 ●	502954 ●	502955 ●		
M 6	1	502217 ●	500899 ●	502222 ●	500904 ●	502224 ●	500905 ●		
M 7	1	502915 ●	502914 ●	502274 ●	500951 ●				
M 8	1,25	502304 ●	500983 ●	502308 ●	500989 ●	502309 ●	500990 ●		
M 9	1,25	502348 ●	501025 ●	502800 ●	502801 ●				
M 10	1,5	501455 ●	500161 ●	501459 ●	500167 ●	503093 ●	503094 ●		
M 11	1,5	501493 ●	503125 ●	503911 ●	503904 ●				
M 12	1,75	501515 ●	500220 ●	501520 ●	500227 ●	503759 ●	503760 ●		
M 14	2	503905 ●	503920 ●	501576 ●	500281 ●	505585 ○	500282 ○		
M 16	2	501625 ●	500330 ●	501628 ●	500334 ●	503643 ●	500335 ●		
M 18	2,5	503907 ●	503921 ●	501666 ●	500373 ●				
M 20	2,5	501750 ●	500450 ●	501753 ●	500454 ●	503915 ●	503919 ●		
M 22	2,5	503879 ●	503922 ●	501786 ●	503353 ●				
M 24	3	503588 ●	500510 ●	501819 ●	500514 ●				
M 27	3	503908 ●	506047 ●	501871 ●	500562 ●				

Precision Thread Gages

ISO metric thread DIN 13
Gage dimensions acc. DIN ISO 1502



GR

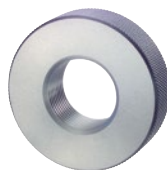


AR

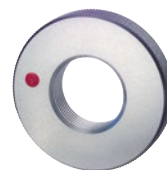
ORDER-CODE →		GR	AR	GR-6e	AR-6e	GR-6h	AR-6h	
d	P mm	6g	6g	6e	6e	6h	6h	
		GO ring gage	NO GO ring gage	GO ring gage	NO GO ring gage	GO ring gage	NO GO ring gage	
↓								
		Part #	Part #	Part #	Part #	Part #	Part #	
M 30	3,5	501929 ●	500623 ●	501931 ●	500625 ●	501932 ●	500626 ●	
M 33	3,5	501975 ●	500664 ●	504575 ●	505324 ●	503924 ●	503925 ●	
M 36	4	502011 ●	500696 ●	503038 ●	540008 ●	502012 ●	500697 ●	
M 39	4	502039 ●	500723 ●	518837 ●	540862 ●	503893 ●	506052 ●	
M 42	4,5	502093 ●	500775 ●			503932 ●	506061 ●	
M 45	4,5	502108 ●	500791 ●			506059 ●	506062 ●	
M 48	5	502125 ●	500807 ●			505775 ●	505776 ●	
M 52	5	502176 ●	500860 ●			506060 ●	506063 ●	
M 56	5,5	502199 ●	500877 ●					
M 60	5,5	502244 ●	500923 ●					
M 64	6	502257 ●	500935 ●					
M 68	6	502267 ●	500944 ●					

Precision Thread Gages

ISO metric thread DIN 13
Gage dimensions acc. DIN ISO 1502



GR

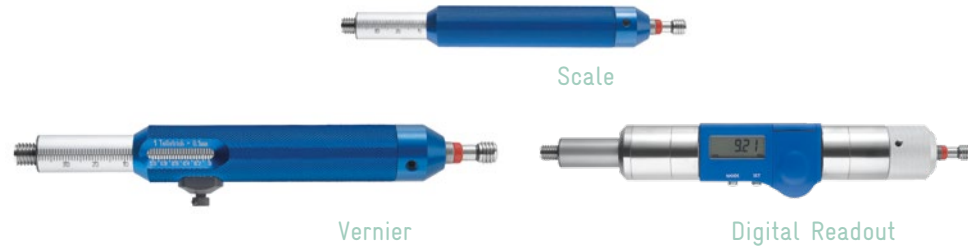


AR

ORDER-CODE →		GR-4h	AR-4h	GR-LH	AR-LH	GR-6e-LH	AR-6e-LH	
d	P mm	4h GO ring gage	4h NO GO ring gage	6g Left Hand GO ring gage	6g Left Hand NO GO ring gage	6e Left Hand GO ring gage	6e Left Hand NO GO ring gage	
↓								
		Part #	Part #	Part #	Part #	Part #	Part #	
M 30	3,5	501930 ●	500624 ●	501933 ●	500627 ●			
M 33	3,5			501976 ●	500665 ●			
M 36	4			502013 ●	500698 ●			
M 39	4			502987 ●	502988 ●			
M 42	4,5			503533 ●	503933 ●			
M 45	4,5			503327 ●	505825 ●			
M 48	5			503534 ●	503726 ●			
M 52	5			503535 ●	506064 ●			
M 56	5,5							
M 60	5,5							
M 64	6							
M 68	6							

Precision Thread Gages - MultiCheck

ISO metric thread DIN 13
 Gage dimensions acc.
 DIN ISO 1502
 Gaging depth up to 4 x D,
 max. 80 mm



ORDER-CODE →			MCS	MCN		MCD	
Accuracy of reading			0,5 mm	0,1 mm		0,01 mm	
d ↓	P mm	System size	Scale 6H	Vernier 6H		Digital 6H	
					System size	Digital readout incl. inspection certificate 	
			Part #		Part #		Part #
M 2	0,4	15	590035 ●	590242 ●	28	590137 ●	
M 2,5	0,45	15	590069 ●	590243 ●	28	590138 ●	
M 3	0,5	15	590005 ●	590244 ●	28	590119 ●	
M 3,5	0,6	15	590070 xx	590245 xx	28	590139 xx	
M 4	0,7	15	590006 ●	590246 ●	28	590117 ●	
M 5	0,8	15	590007 ●	590247 ●	28	590140 ●	
M 6	1	15	590000 ●	590234 ●	28	590114 ●	
M 7	1	20	590071 ●	590248 ●	28	590115 ●	
M 8	1,25	20	590001 ●	590249 ●	28	590116 ●	
M 10	1,5	20	590002 ●	590251 ●	28	590118 ●	
M 12	1,75	25	590003 ●	590253 ●	35	590121 ●	
M 14	2	25	590014 ●	590254 ●	35	590144 ●	
M 16	2	28	590015 ●	590255 ●	35	590145 ●	
M 18	2,5	28	590074 ●	590256 ●	35	590146 ●	
M 20	2,5	36	590017 xx	590257 xx	35	590147 xx	
M 22	2,5	36	590075 xx	590258 xx	35	590148 xx	
M 24	3	36	590076 xx	590259 xx	35	590149 xx	
M 27	3	43	590077 xx	590260 xx	35	590150 xx	
M 30	3,5	43	590078 xx	590261 xx	35	590151 xx	

Prices for GO side DLC coated on request

MultiCheck setting gage (article no. 592010), see price list
 see figure page 228

dismantling kit for threads Ø 2-24, see price list

Data transfer on request

MultiCheck digital with integrated wireless data transmission
 (MCDW) on request

Precision Thread Gages – MultiCheck Digital with changeable gage inserts

ISO metric thread DIN 13

Gage dimensions acc. DIN ISO 1502

Gaging depth up to 4 x D, max. 80 mm

Specification: basic device MultiCheck Digital with changeable gage inserts, measuring sleeve, interchangeable gage inserts, protective sleeve reading accuracy 0.01mm Usage: checking of the gage accuracy and measurement of the thread depths



ORDER-CODE →		WMCD	WMH	WGD	WSH	AD	
d	P mm	System size	basic unit incl. inspection certificate 	measuring sleeve incl. inspection certificate	changeable thread gage incl. inspection certificate	protective sleeve incl. inspection certificate	NO GO plug gage incl. inspection certificate
↓							
M 2	0,45	28	Part # 229743 ●	Part # 229747 ●	Part # 232694 ●	Part # 232697 ●	Part # 510191 ●
M 3	0,5				232693 ●	232696 ●	510289 ●
M 4	0,7				232692 ●	232695 ●	510358 ●
M 5	0,8				229750 ●	229759 ●	510419 ●
M 6	1				229751 ●	229760 ●	510469 ●
M 8	1,25				229752 ●	229761 ●	510519 ●
M 10	1,5				229753 ●	229762 ●	510067 ●
M 12	1,75	35	229744 ●	229748 ●	229754 ●	229763 ●	510106 ●
M 14	2				229755 ●	229764 ●	510130 ●
M 16	2				229756 ●	229765 ●	510151 ●
M 18	2,5				229757 ●	229766 ●	510174 ●
M 20	2,5				229758 ●	229767 ●	510216 ●

Prices for other thread types and smooth gages on request
Options: dirt or air groove; surface-treated e.g. hard-chrome plated, TiN or DLC-coated; integrated wireless module
MultiCheck setting gage (article no. 592010), see price list see figure page 228

Assembly wrench (article no. 229768), see price list
Our standard delivery programme includes system sizes within whose thread sizes, of Ø2-10 mm and ≤20 mm, of different thread types can be changed.

MultiCheck digital with integrated wireless data transmission (MCDW) on request

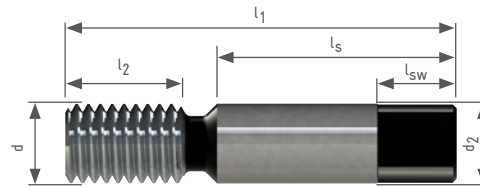
- One single measuring device for checking both – accuracy to thread size and thread depth
- Thread gaging cycle time reduced by 50%
- Defined flattening on the first thread enables an exact measurement of the thread's screw-in depth in the gage • Easy and error-free reading of the thread depth due to high-contrast numerical display (reading accuracy 0.01mm)
- Cost-saving potential due to the simple and quick change of gage inserts

Thread-Coordinate Gage Rod

ISO metric thread DIN 13

Specification: Pitch correction in the thread
Fitted in two thread flanks for centric mounting

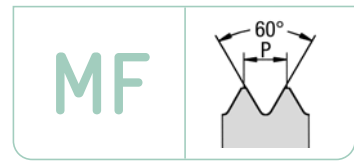
Usage: Determination of position and angularity of the thread via 3D measuring machine



ORDER-CODE								KD	
d	P mm	d ₂	l ₁	l ₂	l _s	sw	l _{sw}	Coordinate gage rod	
↓									
								Part #	
M 3	0,5	6	26	5	18	4	6	220629	●
M 4	0,7	6	29	7	18	4	6	220630	●
M 5	0,8	6	29	8	18	4	6	220631	●
M 6	1	6	31	10	18	4	6	220632	●
M 8	1,25	8	41	13	24	6	8	220258	●
M 10	1,5	10	49	15	30	8	10	220635	●
M 12	1,75	12	59	18	36	10	12	220636	●
M 14	2	14	67	20	42	12	14	220637	●
M 16	2	16	73	20	48	14	16	220638	●

Precision Thread Gages

ISO metric fine thread DIN 13
Gage dimensions acc. DIN ISO 1502



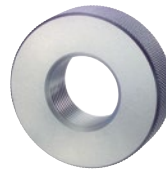
LD

LD-DLC

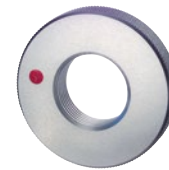
ORDER-CODE →		LD	LD-6G	LD-DLC	LD-4H	LD-LH	LD-6G-LH	LD-5H
d	P mm	6H Plug gage P=0,2 Tol. 4H	6G Plug gage	6H Plug gage 6G: DLC hardness HV 0.05 > 5000	4H Plug gage	6H Left Hand left hand Plug gage	6G Left Hand left hand Plug gage	5H Plug gage
↓	↓							
		Part #	Part #	Part #	Part #	Part #	Part #	Part #
M 1	0,2	530859 ●						514276 ●
M 1,2	0,2	528018 ●						514294 ●
M 1,4	0,2	513456 ●						511633 ●
M 1,6	0,2	517010 ●						514210 ●
M 1,8	0,2	513362 ●						513520 ●
M 2	0,2	518211 ●						511869 ●
M 2,5	0,2	530985 ●						511889 ●
M 2	0,25	511872 ●			514143 ●			511870 ●
M 2,2	0,25	511878 ●						511877 ●
M 2,5	0,25	511891 ●			513132 ●			511890 ●
M 3	0,25	512053 ●			512051 ●			512050 ●
M 3,5	0,25	512068 ●						512067 ●
M 4	0,25	514142 ●						512188 ●
M 5	0,25	512235 ●						512233 ●
M 6	0,25	513946 ●						514948 ●
M 2,5	0,35	511892 ●			513962 ○	513976 ○		
M 3	0,35	512054 ●			513713 ●	512056 ●		
M 3,5	0,35	512069 ●			512070 ●	512071 ●		
M 4	0,35	512190 ●			514398 ●	514591 ●		
M 4,5	0,35	512205 ●						
M 5	0,35	512236 ●						
M 6	0,35	512270 ●						
M 7	0,35	512291 ●						
M 8	0,35	512320 ●						
M 9	0,35	512348 ●						
M 10	0,35	520002 ●						
M 3,5	0,5	512072 ●						
M 4	0,5	512195 ●	512197 ●	512791 ●	512196 ●	512198 ●		
M 4,5	0,5	512206 ●	512207 ●		517022 ○	517168 ○		
M 5	0,5	512238 ●	512240 ●	516834 ●	514083 ●	512242 ●		
M 5,5	0,5	512248 ●	512249 ●					

Precision Thread Gages

ISO metric fine thread DIN 13
Gage dimensions acc. DIN ISO 1502



GR

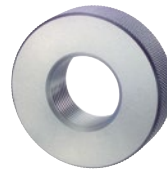


AR

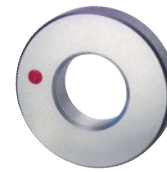
ORDER-CODE →		GR	AR	GR-6e	AR-6e	GR-6h	AR-6h	
d	P mm	6g GO ring gage ≤ M 1,4 Tol. 6h 	6g NO GO ring gage ≤ M 1,4 Tol. 6h 	6e GO ring gage 	6e NO GO ring gage 	6h GO ring gage 	6h NO GO ring gage 	
↓	↓							
		Part #	Part #	Part #	Part #	Part #	Part #	
M 1*	0,2	503692 ●	503693 ●					* tolerance 6g on request
M 1,2*	0,2	503704 ●	503705 ●			see column 1	see column 2	
M 1,4*	0,2	501438 ●	500143 ●					
M 1,6	0,2	501445 ●	500150 ●			504191 ●	504192 ●	
M 1,8	0,2	503212 ●	503213 ●			501451 ●	500157 ●	
M 2	0,2	501709 ●	500413 ●			547089 ●	540740 ●	
M 2,5	0,2	501732 ●	500436 ●			501731 ●	500435 ●	
M 2	0,25	501711 ●	500416 ●			501710 ●	500414 ●	
M 2,2	0,25	501717 ●	500423 ●			505599 ●	500422 ●	
M 2,5	0,25	501735 ●	500437 ●			501733 ●	503559 ●	
M 3	0,25	503544 ●	503545 ●			501912 ●	500605 ●	
M 3,5	0,25	543778 ●	504324 ●			503004 ●	500616 ●	
M 4	0,25	503709 ●	503710 ●			502055 ●	500740 ●	
M 5	0,25	503840 ●	503841 ●			503079 ●	503080 ●	
M 6	0,25	503491 ●	503492 ●			520151 ●	520152 ●	
M 2,5	0,35	501736 ●	500438 ●	501738 ○	500440 ○	502868 ○	502869 ○	
M 3	0,35	501913 ●	500607 ●	501914 ●	500608 ●	501915 ●	500609 ●	
M 3,5	0,35	501925 ●	500617 ●	501926 ○	500618 ○	505614 ●	500619 ●	
M 4	0,35	502057 ●	500742 ●	502059 ○	500743 ○	502060 ●	500744 ●	
M 4,5	0,35	502074 ●	500757 ●					
M 5	0,35	502149 ●	500834 ●					
M 6	0,35	502225 ●	500907 ●					
M 7	0,35	502275 ●	500952 ●					
M 8	0,35	502311 ●	500992 ●					
M 9	0,35	502350 ●	501026 ●					
M 10	0,35	501461 ●	500169 ●					
M 3,5	0,5	501927 ●	500620 ●					
M 4	0,5	502062 ●	500745 ●	502065 ●	500748 ●	502066 ●	500749 ●	
M 4,5	0,5	502075 ●	500758 ●	502076 ●	500759 ●	505919 ○	505920 ○	
M 5	0,5	502152 ●	500836 ●	502155 ●	500838 ●	502156 ●	500839 ●	
M 5,5	0,5	502166 ●	500849 ●					

Precision Thread Gages

ISO metric fine thread DIN 13
Gage dimensions acc. DIN ISO 1502



GR

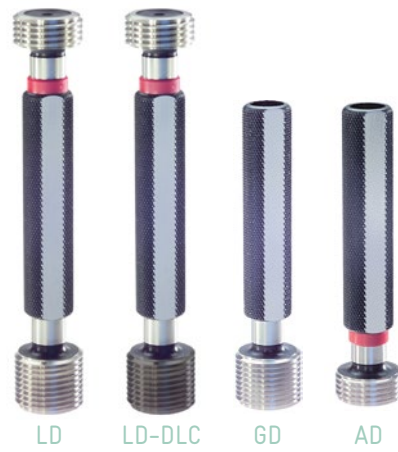


AR

ORDER-CODE →		GR-4h	AR-4h	GR-LH	AR-LH		
d	P mm	4h GO ring gage	4h NO GO ring gage	6g Left Hand left hand GO ring gage	6g Left Hand left hand NO GO ring gage		
↓	↓						
		Part #	Part #	Part #	Part #		
M 1	0,2						
M 1,2	0,2						
M 1,4	0,2						
M 1,6	0,2						
M 1,8	0,2						
M 2	0,2						
M 2,5	0,2						
M 2	0,25	502822 ○	500415 ○				
M 2,2	0,25						
M 2,5	0,25	501734 ○	502795 ○				
M 3*	0,25						
M 3,5	0,25						
M 4	0,25						
M 5	0,25						
M 6	0,25						
M 2,5	0,35	501737 ●	500439 ●	506071 ○	506080 ○		
M 3	0,35	503341 ●	503342 ●	501916 ●	500610 ●		
M 3,5	0,35	503200 ●	503201 ●	503655 ●	503656 ●		
M 4	0,35	502058 ●	502796 ●	503683 ●	503684 ●		
M 4,5	0,35						
M 5	0,35						
M 6	0,35						
M 7	0,35						
M 8	0,35						
M 9	0,35						
M 10	0,35						
M 3,5	0,5						
M 4	0,5	502064 ●	500747 ●	502067 ●	500750 ●		
M 4,5	0,5	505904 ○	503530 ○	503934 ●	503941 ●		
M 5	0,5	502154 ●	500837 ●	502158 ●	500841 ●		
M 5,5	0,5						

Precision Thread Gages

ISO metric fine thread DIN 13
Gage dimensions acc. DIN ISO 1502



ORDER-CODE →		LD	GD	AD	LD-6G	GD-6G	AD-6G	LD-DLC
d	P mm	6H Plug gage	6H GO plug gage	6H NO GO plug gage	6G Plug gage	6G GO plug gage	6G NO GO plug gage	6H Plug gage GO: DLC hardness HV 0.05 > 5000
↓	↓							
		Part #	Part #	Part #	Part #	Part #	Part #	Part #
M 6	0,5	512271 ●			512274 ●			512798 ●
M 6,5	0,5	512285 ●						
M 7	0,5	512292 ●			512294 ●			
M 7,5	0,5	512301 ●						
M 8	0,5	512321 ●			512324 ●			
M 8,5	0,5	512343 ●						
M 9	0,5	512350 ●			512351 ●			
M 10	0,5	511656 ●			511657 ●			
M 11	0,5	511681 ●			514114 ●			
M 12	0,5	511699 ●			511700 ●			
M 13	0,5	511722 ●						
M 14	0,5	511736 ●			511738 ●			
M 15	0,5	511762 ●			511763 ●			
M 16	0,5	511785 ●			511787 ●			
M 17	0,5	511812 ●			518297 ●			
M 18	0,5	511825 ●			513016 ●			
M 19	0,5	511845 ●						
M 20	0,5	511909 ●			516782 ●			
M 21	0,5	511927 ●						
M 22	0,5	511939 ●						
M 23	0,5	511960 ●						
M 24	0,5	511970 ●						
M 25	0,5	514233 ●						
M 26	0,5	512999 ●						
M 27	0,5	513054 ●						
M 28	0,5	513285 ●						
M 29	0,5	513562 ●						
M 30	0,5	513366 ●						
M 31	0,5	512095 ●						
M 32	0,5	512097 ●						
M 33	0,5	512110 ●						

Precision Thread Gages

ISO metric fine thread DIN 13
Gage dimensions acc. DIN ISO 1502

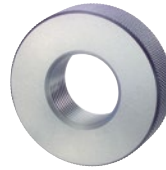
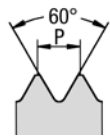


ORDER-CODE →		LD-4H	GD-4H	AD-4H	LD-LH	GD-LH	AD-LH	LD-6G-LH
d	P mm	4H Plug gage	4H GO plug gage	4H NO GO plug gage	6H Left Hand left hand Plug gage	6H Left Hand left hand GO plug gage	6H Left Hand left hand NO GO plug gage	6G Left Hand left hand Plug gage
↓	↓							
		Part #	Part #	Part #	Part #	Part #	Part #	Part #
M 6	0,5	512272 ●			512276 ●			
M 6,5	0,5							
M 7	0,5				514592 ●			
M 7,5	0,5							
M 8	0,5	512322 ●			512325 ●			
M 8,5	0,5							
M 9	0,5				514593 ●			
M 10	0,5	514341 ●			513087 ●			
M 11	0,5	514631 ●			517169 ●			
M 12	0,5	514328 ●			513466 ●			
M 13	0,5	516917 ●						
M 14	0,5	513088 ●			517171 ●			
M 15	0,5				514594 ●			
M 16	0,5				514595 ●			
M 17	0,5				517172 ●			
M 18	0,5				514596 ●			
M 19	0,5							
M 20	0,5							
M 21	0,5							
M 22	0,5							
M 23	0,5							
M 24	0,5							
M 25	0,5							
M 26	0,5							
M 27	0,5							
M 28	0,5							
M 29	0,5							
M 30	0,5							
M 31	0,5							
M 32	0,5							
M 33	0,5							

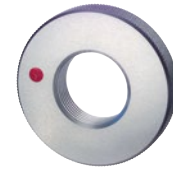
Precision Thread Gages

ISO metric fine thread DIN 13
Gage dimensions acc. DIN ISO 1502

MF



GR

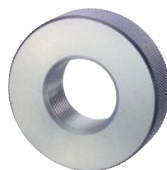


AR

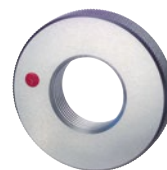
ORDER-CODE →		GR	AR	GR-6e	AR-6e	GR-6h	AR-6h	
d	P mm	6g GO ring gage	6g NO GO ring gage	6e GO ring gage	6e NO GO ring gage	6h GO ring gage	6h NO GO ring gage	
↓	↓							
		Part #	Part #	Part #	Part #	Part #	Part #	
M 6	0,5	502228 ●	500910 ●	502230 ●	500912 ●	502231 ●	500913 ●	
M 6,5	0,5	502241 ●	500922 ●					
M 7	0,5	502276 ●	500953 ●	502277 ●	500955 ●	502278 ●	500956 ●	
M 7,5	0,5	502284 ●	502740 ●					
M 8	0,5	502312 ●	500993 ●	502314 ●	500995 ●	502315 ●	500996 ●	
M 8,5	0,5	502330 ●	501011 ●					
M 9	0,5	502351 ●	501027 ●	502353 ●	501029 ●	503951 ●	501030 ●	
M 10	0,5	501462 ●	500170 ●	501463 ●	500172 ●	502852 ●	502853 ●	
M 11	0,5	501496 ●	500204 ●	501498 ●	500206 ●	501499 ●	500207 ●	
M 12	0,5	501523 ●	500231 ●	501524 ●	500232 ●	501525 ●	500233 ●	
M 13	0,5	501558 ●	500262 ●	505714 ●	502727 ●	505715 ●	502728 ●	
M 14	0,5	501577 ●	500284 ●	501579 ●	500286 ●	502734 ●	502735 ●	
M 15	0,5	501610 ●	500313 ●	503074 ●	500314 ●	503380 ●	500315 ●	
M 16	0,5	501629 ●	500336 ●	501631 ●	500338 ●	503581 ●	503582 ●	
M 17	0,5	501653 ●	500361 ●	506090 ●	506112 ●	506107 ●	506110 ●	
M 18	0,5	501667 ●	500374 ●			503382 ●	505847 ●	
M 19	0,5	501690 ●	500397 ●			506108 ●	506111 ●	
M 20	0,5	501754 ●	500455 ●	506096 ○	506114 ○	506109 ●	505464 ●	
M 21	0,5	502741 ●	502755 ●					
M 22	0,5	501787 ●	500482 ●					
M 23	0,5	501807 ●	500502 ●					
M 24	0,5	501821 ●	500515 ●					
M 25	0,5	501842 ●	500534 ●					
M 26	0,5	502744 ●	502743 ●					
M 27	0,5	501872 ●	500563 ●					
M 28	0,5	501887 ●	500580 ●					
M 29	0,5	502975 ●	502976 ●					
M 30	0,5	503070 ●	500628 ●					
M 31	0,5	503261 ●	503260 ●					
M 32	0,5	502942 ●	502943 ●					
M 33	0,5	502979 ●	502980 ●					

Precision Thread Gages

ISO metric fine thread DIN 13
Gage dimensions acc. DIN ISO 1502



GR

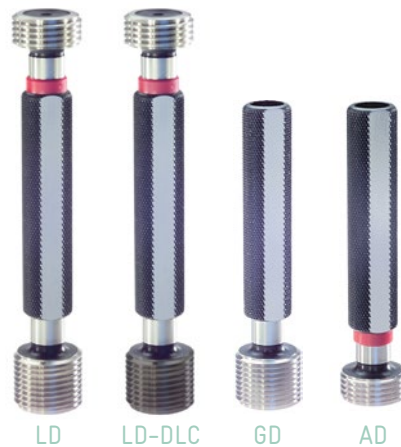


AR

ORDER-CODE →		GR-4h	AR-4h	GR-LH	AR-LH		
d	P mm	4h GO ring gage	4h NO GO ring gage	6g Left Hand left hand GO ring gage	6g Left Hand left hand NO GO ring gage		
↓	↓						
		Part #	Part #	Part #	Part #		
M 6	0,5	502229 ●	500911 ●	502232 ●	500914 ●		
M 6,5	0,5						
M 7	0,5	503193 ●	503194 ●	503935 ●	503942 ●		
M 7,5	0,5						
M 8	0,5	502313 ●	500994 ●	502316 ●	500997 ●		
M 8,5	0,5						
M 9	0,5	502352 ●	501028 ●	503936 ●	503943 ●		
M 10	0,5	503188 ●	500171 ●	501464 ●	500173 ●		
M 11	0,5			506072 ●	506081 ●		
M 12	0,5	502860 ●	502861 ●	503937 ●	503944 ●		
M 13	0,5	503072 ●	503073 ●	506073 ●	506082 ●		
M 14	0,5	501578 ●	500285 ●	506074 ●	506083 ●		
M 15	0,5	505828 ○	503334 ○	503938 ●	506084 ●		
M 16	0,5	501630 ○	500337 ○	503939 ●	503945 ●		
M 17	0,5	506097 ○	506102 ○	506075 ●	506085 ●		
M 18	0,5	506098 ○	506103 ○	503940 ●	503946 ●		
M 19	0,5	506099 ○	503566 ○	506076 ○	506086 ○		
M 20	0,5	505924 ○	505923 ○	506077 ○	506087 ○		
M 21	0,5						
M 22	0,5						
M 23	0,5						
M 24	0,5						
M 25	0,5						
M 26	0,5						
M 27	0,5						
M 28	0,5						
M 29	0,5						
M 30	0,5						
M 31	0,5						
M 32	0,5						
M 33	0,5						

Precision Thread Gages

ISO metric fine thread DIN 13
Gage dimensions acc. DIN ISO 1502



ORDER-CODE →		LD	GD	AD	LD-6G	GD-6G	AD-6G	LD-DLC
d	P mm	6H Plug gage	6H GO plug gage	6H NO GO plug gage	6G Plug gage	6G GO plug gage	6G NO GO plug gage	6H Plug gage GO: DLC hardness HV 0.05 > 5000
↓	↓							
		Part #	Part #	Part #	Part #	Part #	Part #	Part #
M 34	0,5	512125 ●						
M 35	0,5	512134 ●						
M 36	0,5	513561 ●						
M 37	0,5	514184 ●						
M 38	0,5	514226 ●						
M 39	0,5	513747 ●						
M 40	0,5	514150 ●						
M 5	0,75	512243 ●						
M 6	0,75	512277 ●			512280 ●			512799 ●
M 7	0,75	512295 ●			512298 ●			
M 8	0,75	512326 ●			512327 ●			512803 ●
M 9	0,75	512352 ●			512354 ●			
M 10	0,75	511659 ●			511661 ●			512733 ●
M 11	0,75	511682 ●			511683 ●			
M 12	0,75	511701 ●			511702 ●			512739 ●
M 13	0,75	511723 ●			513284 ●			
M 14	0,75	511739 ●			511742 ●			
M 15	0,75	511764 ●			511765 ●			
M 16	0,75	511789 ●			511790 ●			
M 17	0,75	511813 ●			511814 ●			
M 18	0,75	511826 ●			511828 ●			
M 19	0,75	511846 ●			511847 ●			
M 20	0,75	511910 ●			514211 ●			
M 21	0,75	511928 ●			511929 ●			
M 22	0,75	511940 ●			511941 ●			
M 23	0,75	512997 ●			523226 ●			
M 24	0,75	511971 ●						
M 25	0,75	511984 ●			513970 ○			
M 26	0,75	511993 ●						
M 27	0,75	512009 ●			512010 ○			
M 28	0,75	512025 ●						

Precision Thread Gages

ISO metric fine thread DIN 13
Gage dimensions acc. DIN ISO 1502



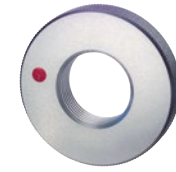
ORDER-CODE →		LD-4H	GD-4H	AD-4H	LD-LH	GD-LH	AD-LH	LD-6G-LH
d	P mm	4H Plug gage	4H GO plug gage	4H NO GO plug gage	6H Left Hand left hand Plug gage	6H Left Hand left hand GO plug gage	6H Left Hand left hand NO GO plug gage	6G Left Hand left hand Plug gage
↓	↓							
		Part #	Part #	Part #	Part #	Part #	Part #	Part #
M 34	0,5							
M 35	0,5							
M 36	0,5							
M 37	0,5							
M 38	0,5							
M 39	0,5							
M 40	0,5							
M 5	0,75							
M 6	0,75	512278 ●			512281 ●			513003 ●
M 7	0,75	512296 ●			513676 ●			514225 ●
M 8	0,75	514632 ●			512329 ●			
M 9	0,75	517211 ●			514031 ●			
M 10	0,75	511660 ●			511662 ●			517197 ●
M 11	0,75	517212 ●			514468 ●			
M 12	0,75	517214 ●			513885 ●			
M 13	0,75	517213 ●			514597 ●			
M 14	0,75	511740 ●			511744 ●			
M 15	0,75				513785 ●			
M 16	0,75	516771 ●			511791 ●			
M 17	0,75				517176 ●			
M 18	0,75				516901 ○			
M 19	0,75							
M 20	0,75				514340 ●			
M 21	0,75							
M 22	0,75	514661 ●			517216 ○			
M 23	0,75				514635 ○			
M 24	0,75				514320 ●			
M 25	0,75							
M 26	0,75				517217 ○			
M 27	0,75							
M 28	0,75							

Precision Thread Gages

ISO metric fine thread DIN 13
Gage dimensions acc. DIN ISO 1502



GR

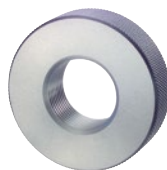


AR

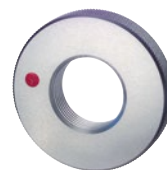
ORDER-CODE →		GR	AR	GR-6e	AR-6e	GR-6h	AR-6h		
d	P mm	6g GO ring gage	6g NO GO ring gage	6e GO ring gage	6e NO GO ring gage	6h GO ring gage	6h NO GO ring gage		
↓	↓								
		Part #		Part #		Part #		Part #	
M 34	0,5	501989 ●	500676 ●						
M 35	0,5	501997 ●	500685 ●						
M 36	0,5	503262 ●	503263 ●						
M 37	0,5	503629 ●	503630 ●						
M 38	0,5	502814 ●	502815 ●						
M 39	0,5	502040 ●	500724 ●						
M 40	0,5	502077 ●	500760 ●						
M 5	0,75	502160 ●	500843 ●	502162 ○	505752 ○	505931 ●	505932 ●		
M 6	0,75	502234 ●	500916 ●	502237 ●	500918 ●	502238 ●	500919 ●		
M 7	0,75	502279 ●	500957 ●	502281 ●	500959 ●	502282 ●	500960 ●		
M 8	0,75	502317 ●	500998 ●	502319 ●	501000 ●	502320 ●	501001 ●		
M 9	0,75	502354 ●	501031 ●	502355 ●	501032 ●	503130 ●	503131 ●		
M 10	0,75	501465 ●	500174 ●	501466 ●	500176 ●	501467 ●	500177 ●		
M 11	0,75	501500 ●	500208 ●	501501 ●	500209 ●	501502 ●	505442 ●		
M 12	0,75	501526 ●	500234 ●	501528 ●	500236 ●	501529 ●	500237 ●		
M 13	0,75	501559 ●	500263 ●	501560 ●	500264 ●	505583 ●	500265 ●		
M 14	0,75	501580 ●	500287 ●	501582 ●	500289 ●	501583 ●	500290 ●		
M 15	0,75	501611 ●	500316 ●	501612 ●	500317 ●	505786 ●	503117 ●		
M 16	0,75	501632 ●	500339 ●	501634 ●	500341 ●	501635 ●	503376 ●		
M 17	0,75	501654 ●	500362 ●	501655 ●	500363 ●	501656 ●	500364 ●		
M 18	0,75	501668 ●	500375 ●	501669 ●	500376 ●	503526 ●	503525 ●		
M 19	0,75	501691 ●	500398 ●	501692 ●	505459 ●	503554 ●	503977 ●		
M 20	0,75	501755 ●	500456 ●	501756 ●	500457 ●	502903 ●	502904 ●		
M 21	0,75	501774 ●	500474 ●						
M 22	0,75	501788 ●	500484 ●	506150 ○	506163 ○	501789 ○	500485 ○		
M 23	0,75	501808 ●	500503 ●	506151 ○	506164 ○	501809 ○	505468 ○		
M 24	0,75	501822 ●	500516 ●			503976 ●	506181 ●		
M 25	0,75	501843 ●	500535 ●			505936 ●	505937 ●		
M 26	0,75	501856 ●	500547 ●			506189 ●	506182 ●		
M 27	0,75	501873 ●	500564 ●	506186 ○	506187 ○				
M 28	0,75	501888 ●	500582 ●						

Precision Thread Gages

ISO metric fine thread DIN 13
Gage dimensions acc. DIN ISO 1502



GR

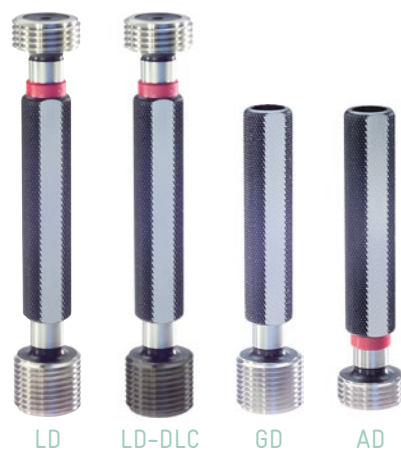


AR

ORDER-CODE →		GR-4h	AR-4h	GR-LH	AR-LH		
d	P mm	4h GO ring gage	4h NO GO ring gage	6g Left Hand left hand GO ring gage	6g Left Hand left hand NO GO ring gage		
↓	↓						
		Part #	Part #	Part #	Part #		
M 34	0,5						
M 35	0,5						
M 36	0,5						
M 37	0,5						
M 38	0,5						
M 39	0,5						
M 40	0,5						
M 5	0,75			503264	503265	●	●
M 6	0,75	502236	500917	502239	500920	●	●
M 7	0,75	502280	500958	502283	500961	●	●
M 8	0,75	502318	500999	502321	501002	●	●
M 9	0,75	503948	503950	502783	502782	●	●
M 10	0,75	503150	500175	501468	500178	●	●
M 11	0,75	506100	506104	501503	500210	●	●
M 12	0,75	501527	500235	501530	500238	●	●
M 13	0,75	503541	503553	506078	506088	●	●
M 14	0,75	501581	500288	501584	500291	●	●
M 15	0,75	503949	506105	503399	505856	●	●
M 16	0,75	501633	500340	501636	500342	●	●
M 17	0,75	506101	506106	506079	506089	●	●
M 18	0,75	506156	506169	503241	503242	●	●
M 19	0,75	506157	506170	501693	505460	●	●
M 20	0,75	502762	502763	502787	502788	●	●
M 21	0,75	501775	500475	503954	503962	●	●
M 22	0,75	503965	503971	506134	506142	●	●
M 23	0,75	506158	506171	503102	503101	●	●
M 24	0,75	501823	500517	503587	503723	●	●
M 25	0,75	503966	506172	501844	500536	●	●
M 26	0,75	506159	506173	505970	506143	●	●
M 27	0,75	503967	506174	505610	506144	●	●
M 28	0,75	506160	506175	505902	506145	●	●

Precision Thread Gages

ISO metric fine thread DIN 13
Gage dimensions acc. DIN ISO 1502



ORDER-CODE →		LD	GD	AD	LD-6G	GD-6G	AD-6G	LD-DLC
d	P mm	6H Plug gage	6H GO plug gage	6H NO GO plug gage	6G Plug gage	6G GO plug gage	6G NO GO plug gage	6H Plug gage GO: DLC hardness HV 0.05 > 5000
↓	↓							
		Part #	Part #	Part #	Part #	Part #	Part #	Part #
M 29	0,75	512034 ●						
M 30	0,75	512078 ●						
M 31	0,75	513442 ●						
M 32	0,75	516791 ●						
M 33	0,75	512111 ●						
M 34	0,75	516445 ●						
M 35	0,75	513917 ●						
M 36	0,75	512147 ●						
M 37	0,75	513182 ●						
M 38	0,75	512159 ●						
M 39	0,75	512168 ●						
M 40	0,75	512208 ●						
M 8	1	512331 ●			512335 ●			512804 ●
M 9	1	512356 ●			512359 ●			
M 10	1	511663 ●			511668 ●			512735 ●
M 11	1	511684 ●			511685 ●			
M 12	1	511703 ●			511706 ●			512740 ●
M 13	1	511724 ●			511725 ●			
M 14	1	511745 ●			511747 ●			512745 ●
M 15	1	511766 ●			511768 ●			
M 16	1	511792 ●			511795 ●			512750 ●
M 17	1	511815 ●			511816 ●			
M 18	1	511829 ●			511831 ●			512753 ●
M 19	1	511849 ●			511851 ●			
M 20	1	511911 ●			511913 ●			512760 ●
M 21	1	511930 ●			511932 ●			
M 22	1	511942 ●			511945 ●			
M 23	1	511961 ●			511962 ●			
M 24	1	511972 ●			511974 ●			
M 25	1	511985 ●			511986 ●			
M 26	1	511994 ●			511995 ●			

Precision Thread Gages

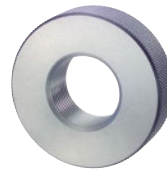
ISO metric fine thread DIN 13
Gage dimensions acc. DIN ISO 1502



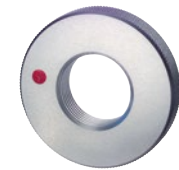
ORDER-CODE →		LD-4H	GD-4H	AD-4H	LD-LH	GD-LH	AD-LH	LD-6G-LH
d	P mm	4H	4H	4H	6H Left Hand	6H Left Hand	6H Left Hand	6G Left Hand
		Plug gage	GO plug gage	NO GO plug gage	left hand Plug gage	left hand GO plug gage	left hand NO GO plug gage	left hand Plug gage
↓	↓							
		Part #	Part #	Part #	Part #	Part #	Part #	Part #
M 29	0,75							
M 30	0,75							
M 31	0,75							
M 32	0,75							
M 33	0,75							
M 34	0,75							
M 35	0,75							
M 36	0,75							
M 37	0,75							
M 38	0,75							
M 39	0,75							
M 40	0,75							
M 8	1	512332 ●			512340 ●			512341 ●
M 9	1	512358 ●			512360 ●			514643 ●
M 10	1	511665 ●			511673 ●			511674 ●
M 11	1	514205 ●			511686 ●			517227 ●
M 12	1	511704 ●			511708 ●			511710 ●
M 13	1	514005 ●			511727 ●			517228 ●
M 14	1	513384 ●			511751 ●			513215 ●
M 15	1	511767 ●			511770 ●			
M 16	1	511794 ●			511799 ●			520023 ●
M 17	1	514668 ●			511817 ●			517236 ●
M 18	1	511830 ●			511832 ●			517238 ●
M 19	1	511850 ●			511853 ●			
M 20	1	511912 ●			511915 ●			520026 ●
M 21	1	514662 ●			520014 ●			
M 22	1	511944 ●			511947 ●			520027 ●
M 23	1	514663 ●			520016 ●			
M 24	1	511973 ●			511975 ●			520028 ●
M 25	1	513153 ●			514639 ●			520029 ●
M 26	1	513451 ●			520019 ●			

Precision Thread Gages

ISO metric fine thread DIN 13
Gage dimensions acc. DIN ISO 1502



GR

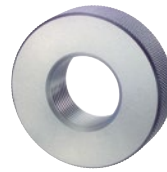


AR

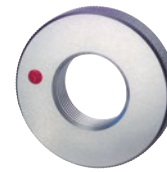
ORDER-CODE →		GR	AR	GR-6e	AR-6e	GR-6h	AR-6h		
d	P mm	6g GO ring gage	6g NO GO ring gage	6e GO ring gage	6e NO GO ring gage	6h GO ring gage	6h NO GO ring gage		
↓	↓								
		Part #		Part #		Part #		Part #	
M 29	0,75	501899 ●	500592 ●						
M 30	0,75	501934 ●	500630 ●	506155 ●	506168 ●	503835 ●	506184 ●		
M 31	0,75	503105 ●	500648 ●						
M 32	0,75	501958 ●	500651 ●						
M 33	0,75	502916 ●	500666 ●						
M 34	0,75	502918 ●	500677 ●						
M 35	0,75	501998 ●	500686 ●						
M 36	0,75	502014 ●	500699 ●						
M 37	0,75	502968 ●	500710 ●						
M 38	0,75	502932 ●	500714 ●						
M 39	0,75	503580 ●	500725 ●						
M 40	0,75	502078 ●	500761 ●						
M 8	1	502322 ●	501003 ●	502325 ●	501006 ●	502326 ●	501007 ●		
M 9	1	502357 ●	501034 ●	502358 ●	501035 ●	502359 ●	501036 ●		
M 10	1	501470 ●	500179 ●	501474 ●	500182 ●	501475 ●	500183 ●		
M 11	1	501504 ●	500211 ●	501505 ●	500212 ●	501506 ●	500213 ●		
M 12	1	501531 ●	500239 ●	501535 ●	500242 ●	501536 ●	500243 ●		
M 13	1	501561 ●	500266 ●	501562 ●	500267 ●	501563 ●	500268 ●		
M 14	1	501585 ●	500292 ●	501587 ●	500293 ●	501588 ●	500294 ●		
M 15	1	501613 ●	500318 ●	501615 ●	500320 ●	501616 ●	500321 ●		
M 16	1	501637 ●	500343 ●	501640 ●	500347 ●	501641 ●	500348 ●		
M 17	1	501657 ●	500365 ●	501658 ●	500366 ●	501659 ●	500367 ●		
M 18	1	501670 ●	500377 ●	501673 ●	500380 ●	501674 ●	500381 ●		
M 19	1	501695 ●	500399 ●	501696 ●	500400 ●	502778 ●	500401 ●		
M 20	1	501757 ●	500458 ●	501759 ●	500460 ●	501760 ●	500461 ●		
M 21	1	501776 ●	500476 ●	505602 ●	505466 ●	505808 ●	505809 ●		
M 22	1	501790 ●	500486 ●	501792 ●	500488 ●	501793 ●	500489 ●		
M 23	1	501811 ●	500505 ●	501812 ●	500506 ●	501813 ●	500507 ●		
M 24	1	501824 ●	500518 ●	501826 ●	500519 ●	501827 ●	500520 ●		
M 25	1	501845 ●	500537 ●	501846 ●	500538 ●	501847 ●	500539 ●		
M 26	1	501857 ●	500548 ●	501858 ●	500549 ●	501859 ●	500550 ●		

Precision Thread Gages

ISO metric fine thread DIN 13
Gage dimensions acc. DIN ISO 1502



GR

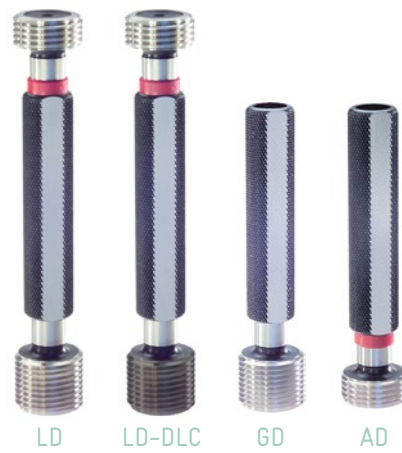


AR

ORDER-CODE →		GR-4h	AR-4h	GR-LH	AR-LH				
d	P mm	4h GO ring gage	4h NO GO ring gage	6g Left Hand left hand GO ring gage	6g Left Hand left hand NO GO ring gage				
↓	↓								
		Part #	Part #	Part #	Part #				
M 29	0,75								
M 30	0,75			506185	●	506146	●		
M 31	0,75								
M 32	0,75								
M 33	0,75								
M 34	0,75								
M 35	0,75								
M 36	0,75								
M 37	0,75								
M 38	0,75								
M 39	0,75								
M 40	0,75								
M 8	1	502324	●	501005	●	502327	●	501008	●
M 9	1	505670	●	503927	●	502360	●	501037	●
M 10	1	501472	●	500181	●	501477	●	500185	●
M 11	1	503234	●	503235	●	502747	●	502746	●
M 12	1	501533	●	500241	●	501537	●	500244	●
M 13	1	503082	●	505771	●	501564	●	500269	●
M 14	1	501586	●	503269	●	501589	●	500295	●
M 15	1	501614	●	500319	●	501617	●	500322	●
M 16	1	501639	●	500346	●	501643	●	500349	●
M 17	1	502902	●	503826	●	501660	●	500368	●
M 18	1	501672	●	500379	●	501675	●	500382	●
M 19	1	503542	●	503973	●	501697	●	500402	●
M 20	1	501758	●	500459	●	501761	●	500462	●
M 21	1	503146	●	503147	●	506137	●	506147	●
M 22	1	501791	●	500487	●	501794	●	500490	●
M 23	1	503969	●	503974	●	506139	●	506148	●
M 24	1	501825	●	505470	●	501828	●	500522	●
M 25	1	502900	●	503751	●	503313	●	503314	●
M 26	1	502899	●	503975	●	501860	●	500551	●

Precision Thread Gages

ISO metric fine thread DIN 13
Gage dimensions acc. DIN ISO 1502



ORDER-CODE →		LD	GD	AD	LD-6G	GD-6G	AD-6G	LD-DLC
d	P mm	6H	6H	6H	6G	6G	6G	6H
		Plug gage	GO plug gage	NO GO plug gage	Plug gage	GO plug gage	NO GO plug gage	Plug gage GO: DLC hardness HV 0.05 > 5000
↓	↓							
		Part #	Part #	Part #	Part #	Part #	Part #	Part #
M 27	1	512011 ●			512012 ●			
M 28	1	512026 ●			512027 ●			
M 29	1	512035 ●			513718 ●			
M 30	1	512079 ●			512081 ●			
M 32	1	512098 ●			512099 ●			
M 33	1	512112 ●			512114 ●			
M 34	1	512126 ●			516792 ●			
M 35	1	512135 ●			514470 ●			
M 36	1	512148 ●			512149 ●			
M 38	1	512160 ●			512161 ●			
M 39	1	512169 ●						
M 40	1	512209 ●			512210 ●			
M 42	1		511113 ●	510384 ●				
M 45	1		511123 ●	510396 ●				
M 48	1		511138 ●	510410 ●				
M 50	1		511165 ●	510435 ●				
M 52	1		511175 ●	510445 ●				
M 55	1		513565 ●	513566 ●				
M 56	1		511188 ●	510458 ●				
M 58	1		511194 ●	510465 ●				
M 60	1		511212 ●	513147 ●				
M 62	1		513478 ●	513479 ●				
M 64	1		513730 ●	513731 ●				
M 65	1		514015 ●	514016 ●				
M 68	1		511228 ●	516620 ●				
M 70	1		511239 ●	510507 ●				
M 72	1		520030 ●	520033 ●				
M 75	1		520031 ●	520034 ●				
M 76	1		511249 ●	520035 ●				
M 78	1		520032 ●	520036 ●				
M 80	1		511273 ●	520037 ●				

Precision Thread Gages

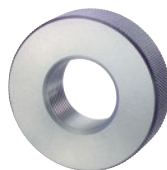
ISO metric fine thread DIN 13
Gage dimensions acc. DIN ISO 1502



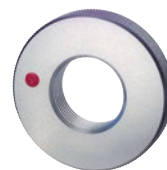
ORDER-CODE →		LD-4H	GD-4H	AD-4H	LD-LH	GD-LH	AD-LH	LD-6G-LH
d	P mm	4H Plug gage	4H GO plug gage	4H NO GO plug gage	6H Left Hand left hand Plug gage	6H Left Hand left hand GO plug gage	6H Left Hand left hand NO GO plug gage	6G Left Hand left hand Plug gage
↓	↓							
		Part #	Part #	Part #	Part #	Part #	Part #	Part #
M 27	1	514664 ●			512014 ●			
M 28	1	514665 ●			513575 ●			
M 29	1	514666 ●			520022 ●			
M 30	1	512080 ●			512082 ●			517267 ●
M 32	1	514200 ●			512100 ●			
M 33	1	512113 ●			512115 ●			
M 34	1	514674 ●			512128 ●			
M 35	1	514675 ●			512136 ●			
M 36	1	514676 ●			516794 ●			
M 38	1	517272 ●			517222 ●			
M 39	1							
M 40	1	516799 ●			512211 ●			
M 42	1					513222 ●	520040 ●	
M 45	1					513673 ●	520041 ●	
M 48	1					514650 ●	514651 ●	
M 50	1					516866 ●	516867 ●	
M 52	1					517229 ●	517230 ●	
M 55	1					517231 ●	517232 ●	
M 56	1					517233 ●	517234 ●	
M 58	1					517235 ●	517237 ●	
M 60	1					517239 ●	517240 ●	
M 62	1							
M 64	1							
M 65	1							
M 68	1							
M 70	1							
M 72	1							
M 75	1							
M 76	1							
M 78	1							
M 80	1							

Precision Thread Gages

ISO metric fine thread DIN 13
Gage dimensions acc. DIN ISO 1502



GR

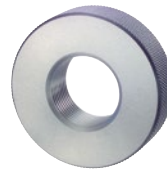


AR

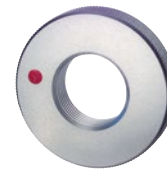
ORDER-CODE →		GR	AR	GR-6e	AR-6e	GR-6h	AR-6h						
d	P mm	6g GO ring gage	6g NO GO ring gage	6e GO ring gage	6e NO GO ring gage	6h GO ring gage	6h NO GO ring gage						
↓	↓												
		Part #		Part #		Part #		Part #					
M 27	1	501874	●	500565	●	501876	●	500566	●	501877	●	500567	●
M 28	1	501889	●	500583	●	501891	●	500584	●	501892	●	500585	●
M 29	1	501900	●	500593	●								
M 30	1	501935	●	500631	●	501937	●	500632	●	501938	●	500633	●
M 32	1	501959	●	500652	●	501961	●	500653	●	501962	●	500654	●
M 33	1	501977	●	500667	●	503097	●	503098	●	501978	●	500668	●
M 34	1	501990	●	500678	●	503719	●	506130	●	501991	●	500679	●
M 35	1	501999	●	500687	●	502000	●	503664	●	502001	●	500688	●
M 36	1	502015	●	500700	●	502016	●	505479	●	505617	●	500701	●
M 38	1	502031	●	500715	●	502875	●	502876	●	505720	●	500716	●
M 39	1	502041	●	500726	●								
M 40	1	502079	●	500762	●	502877	●	502878	●	502879	●	500763	●
M 42	1	502095	●	500778	●	502096	●	503602	●	505626	●	500779	●
M 45	1	502109	●	500793	●	505760	●	505761	●	503827	●	500794	●
M 48	1	502127	●	500808	●	506129	●	500809	●	506196	●	500809	●
M 50	1	502168	●	500852	●	505830	●	505831	●	503982	●	500853	●
M 52	1	502178	●	500862	●	506131	●	503953	●	505946	●	500863	●
M 55	1	502794	●	502793	●	506132	●	506133	●	505925	●	500890	●
M 56	1	502200	●	500878	●	503955	●	503956	●	506197	●	500879	●
M 58	1	502209	●	500890	●	506135	●	506136	●	506198	●	500891	●
M 60	1	502245	●	500924	●	505649	●	505509	●	506199	●	500925	●
M 62	1	506643	●	500932	●								
M 64	1	504044	●	504314	●								
M 65	1	503522	●	500941	●								
M 68	1	503496	●	520154	●								
M 70	1	502892	●	520155	●								
M 72	1	520153	●	520156	●								
M 75	1	502293	●	500972	●								
M 76	1	507386	●	520157	●								
M 78	1	502298	●	520158	●								
M 80	1	502333	●	520159	●								

Precision Thread Gages

ISO metric fine thread DIN 13
Gage dimensions acc. DIN ISO 1502



GR

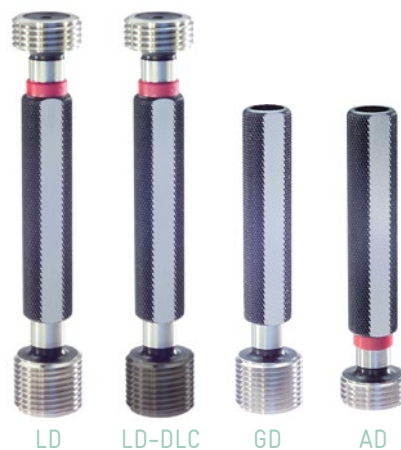


AR

ORDER-CODE →		GR-4h	AR-4h	GR-LH	AR-LH		
d	P mm	4h GO ring gage	4h NO GO ring gage	6g Left Hand left hand GO ring gage	6g Left Hand left hand NO GO ring gage		
↓	↓						
		Part #		Part #		Part #	
M 27	1	501875 ●	506188 ●	501878 ●	500568 ●		
M 28	1	503970 ●	506177 ●	501893 ●	500586 ●		
M 29	1						
M 30	1	501936 ●	503700 ●	501939 ●	500634 ●		
M 32	1	501960 ●	506200 ●	501963 ●	500654 ●		
M 33	1	503957 ●	506201 ●	502990 ●	502989 ●		
M 34	1	505890 ●	505891 ●	502838 ●	500679 ●		
M 35	1	506138 ●	506202 ●	502002 ●	505478 ●		
M 36	1	505921 ●	506203 ●	503047 ●	500701 ●		
M 38	1	503958 ●	506204 ●	502032 ●	505480 ●		
M 39	1						
M 40	1	503959 ●	503983 ●	503267 ●	503268 ●		
M 42	1	503960 ●	506205 ●	502995 ●	502994 ●		
M 45	1	506140 ●	506206 ●	503256 ●	503257 ●		
M 48	1	503961 ●	503984 ●	506116 ●	506117 ●		
M 50	1	505862 ●	503414 ●	505636 ●	505955 ●		
M 52	1	506141 ●	506207 ●	503952 ●	506118 ●		
M 55	1	506190 ●	506208 ●	506119 ●	506120 ●		
M 56	1	506191 ●	506209 ●	506121 ●	506122 ●		
M 58	1	506192 ●	506210 ●	506123 ●	506124 ●		
M 60	1	506193 ●	506211 ●	506125 ●	506126 ●		
M 62	1						
M 64	1						
M 65	1						
M 68	1						
M 70	1						
M 72	1						
M 75	1						
M 76	1						
M 78	1						
M 80	1						

Precision Thread Gages

ISO metric fine thread DIN 13
Gage dimensions acc. DIN ISO 1502



ORDER-CODE →		LD	GD	AD	LD-6G	GD-6G	AD-6G	LD-DLC
d	P mm	6H Plug gage	6H GO plug gage	6H NO GO plug gage	6G Plug gage	6G GO plug gage	6G NO GO plug gage	6H Plug gage GO: DLC hardness HV 0.05 > 5000
↓	↓							
		Part #	Part #	Part #	Part #	Part #	Part #	Part #
M 10	1,25	511675 ●			511676 ●			513639 ●
M 12	1,25	511711 ●			511713 ●			520038 ○
M 14	1,25	511752 ●			511754 ●			
M 16	1,25	511800 ●						
M 18	1,25	511833 ●						
M 20	1,25	511917 ●						
M 22	1,25	514324 ●						
M 24	1,25	514109 ●						
M 12	1,5	511716 ●			511718 ●			512742 ●
M 13	1,5	511728 ●						
M 14	1,5	511755 ●			511759 ●			512747 ●
M 15	1,5	511771 ●			511772 ●			
M 16	1,5	511802 ●			511806 ●			512751 ●
M 17	1,5	511818 ●			511819 ●			
M 18	1,5	511835 ●			511837 ●			512754 ●
M 19	1,5	511855 ●						
M 20	1,5	511918 ●			511920 ●			512761 ●
M 21	1,5	511933 ●						
M 22	1,5	511948 ●			511951 ●			512765 ●
M 24	1,5	511976 ●			511978 ●			512769 ●
M 25	1,5	511989 ●			511990 ●			512771 ○
M 26	1,5	511997 ●			512000 ●			512772 ○
M 27	1,5	512015 ●			512018 ●			512773 ○
M 28	1,5	512028 ●			512030 ●			512775 ○
M 30	1,5	512083 ●			512085 ●			512783 ○
M 32	1,5	512101 ●			512103 ●			
M 33	1,5	512117 ●			512118 ●			
M 34	1,5	512130 ●			512131 ●			
M 35	1,5	512137 ●			512138 ●			
M 36	1,5	512150 ●			512151 ●			
M 38	1,5	512162 ●			512163 ●			

Precision Thread Gages

ISO metric fine thread DIN 13
Gage dimensions acc. DIN ISO 1502

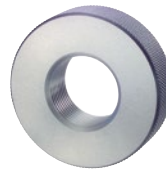
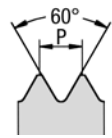


ORDER-CODE →		LD-4H	GD-4H	AD-4H	LD-LH	GD-LH	AD-LH	LD-6G-LH
d	P mm	4H Plug gage	4H GO plug gage	4H NO GO plug gage	6H Left Hand left hand Plug gage	6H Left Hand left hand GO plug gage	6H Left Hand left hand NO GO plug gage	6G Left Hand left hand Plug gage
↓	↓							
		Part #	Part #	Part #	Part #	Part #	Part #	Part #
M 10	1,25	513961 ●			511677 ●			514054 ●
M 12	1,25	512991 ●			511715 ●			514268 ●
M 14	1,25	511753 ●			514640 ●			517241 ●
M 16	1,25							
M 18	1,25							
M 20	1,25							
M 22	1,25							
M 24	1,25							
M 12	1,5	511717 ●			511720 ●			511721 ●
M 13	1,5							
M 14	1,5	511756 ●			511760 ●			511761 ●
M 15	1,5	517274 ●			517224 ●			
M 16	1,5	511804 ●			511810 ●			511811 ●
M 17	1,5	517275 ●			517225 ●			
M 18	1,5	511836 ●			511841 ●			511842 ●
M 19	1,5							
M 20	1,5	511919 ●			511922 ●			516783 ●
M 21	1,5							
M 22	1,5	511949 ●			511954 ●			514653 ●
M 24	1,5	511977 ●			511979 ●			511980 ●
M 25	1,5	514677 ●			511991 ●			517268 ●
M 26	1,5	511998 ●			512002 ●			517242 ●
M 27	1,5	512016 ●			512019 ●			517243 ●
M 28	1,5	512029 ●			512031 ●			517244 ●
M 30	1,5	512084 ●			512087 ●			512088 ●
M 32	1,5	512102 ●			512105 ●			514654 ●
M 33	1,5	513155 ●			512119 ●			517245 ●
M 34	1,5	514698 ●			512132 ●			
M 35	1,5	514026 ●			512140 ●			517246 ●
M 36	1,5	513746 ●			512152 ●			514655 ●
M 38	1,5	513915 ●			512164 ●			514402 ●

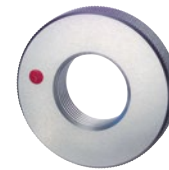
Precision Thread Gages

ISO metric fine thread DIN 13
Gage dimensions acc. DIN ISO 1502

MF



GR

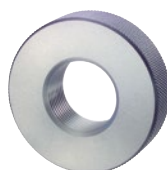


AR

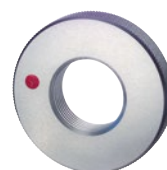
ORDER-CODE →		GR	AR	GR-6e	AR-6e	GR-6h	AR-6h				
d	P mm	6g Gutlehring GO ring gage	6g Ausschusslehring NO GO ring gage	6e Gutlehring GO ring gage	6e Ausschusslehring NO GO ring gage	6h Gutlehring GO ring gage	6h Ausschusslehring NO GO ring gage				
↓	↓										
		Part #		Part #		Part #		Part #		Part #	
M 10	1,25	501479 ●	500187 ●	501481 ●	500189 ●	501483 ●	500191 ●				
M 12	1,25	501539 ●	500246 ●	501541 ●	500247 ●	501542 ●	500248 ●				
M 14	1,25	501592 ●	500297 ●	501594 ●	500299 ●	501595 ●	500300 ●				
M 16	1,25	501644 ●	500350 ●								
M 18	1,25	501677 ●	500384 ●								
M 20	1,25	501762 ●	500463 ●								
M 22	1,25	502890 ●	505741 ●								
M 24	1,25	501829 ●	500523 ●								
M 12	1,5	501544 ●	500250 ●	501547 ●	500253 ●	501548 ●	500254 ●				
M 13	1,5	501565 ●	500271 ●	503258 ●	503259 ●	503708 ●	503998 ●				
M 14	1,5	501596 ●	500301 ●	501600 ●	500305 ●	501601 ●	500306 ●				
M 15	1,5	501618 ●	500323 ●	501619 ●	500324 ●	505590 ●	505453 ●				
M 16	1,5	501645 ●	500351 ●	501649 ●	500356 ●	501650 ●	500357 ●				
M 17	1,5	501662 ●	500369 ●	502827 ●	502828 ●	505991 ●	503798 ●				
M 18	1,5	501678 ●	500385 ●	501682 ●	500391 ●	501684 ●	500392 ●				
M 19	1,5	501698 ●	500403 ●								
M 20	1,5	501763 ●	500464 ●	501766 ●	500467 ●	501767 ●	500468 ●				
M 21	1,5	501778 ●	500478 ●								
M 22	1,5	501795 ●	500491 ●	501800 ●	500496 ●	501801 ●	500497 ●				
M 24	1,5	501830 ●	500524 ●	501833 ●	500526 ●	501834 ●	500527 ●				
M 25	1,5	501849 ●	500541 ●	501851 ●	505471 ●	505609 ●	505472 ●				
M 26	1,5	501862 ●	500553 ●	501864 ●	500554 ●	501865 ●	500555 ●				
M 27	1,5	501879 ●	500569 ●	501881 ●	500571 ●	501882 ●	500572 ●				
M 28	1,5	501894 ●	500587 ●	501895 ●	500588 ●	501896 ●	500589 ●				
M 30	1,5	501941 ●	500636 ●	501944 ●	500638 ●	501945 ●	500639 ●				
M 32	1,5	501965 ●	500656 ●	501967 ●	500658 ●	501968 ●	500659 ●				
M 33	1,5	501980 ●	500668 ●	501981 ●	500669 ●	501982 ●	500679 ●				
M 34	1,5	501992 ●	500680 ●	501993 ●	500681 ●	501994 ●	500682 ●				
M 35	1,5	502003 ●	500688 ●	502004 ●	500690 ●	502005 ●	500691 ●				
M 36	1,5	502017 ●	500702 ●	502019 ●	500703 ●	502020 ●	503017 ●				
M 38	1,5	502033 ●	500716 ●	502035 ●	500718 ●	502036 ●	500719 ●				

Precision Thread Gages

ISO metric fine thread DIN 13
Gage dimensions acc. DIN ISO 1502



GR

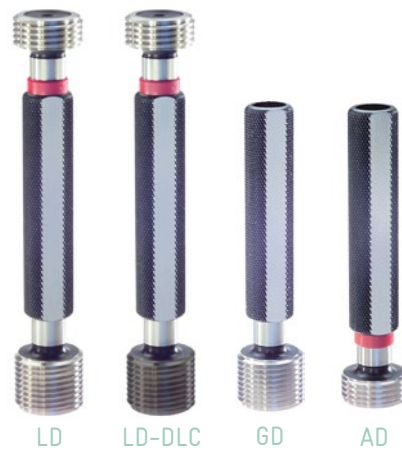


AR

ORDER-CODE →		GR-4h	AR-4h	GR-LH	AR-LH		
d	P mm	4h GO ring gage	4h NO GO ring gage	6g Left Hand left hand GO ring gage	6g Left Hand left hand NO GO ring gage		
↓	↓						
		Part #		Part #		Part #	
M 10	1,25	502947 ●	502948 ●	501484 ●	500192 ●		
M 12	1,25	501540 ●	502949 ●	501543 ●	500249 ●		
M 14	1,25	501593 ●	500298 ●	503438 ●	503439 ●		
M 16	1,25						
M 18	1,25						
M 20	1,25						
M 22	1,25						
M 24	1,25						
M 12	1,5	501546 ●	500252 ●	501549 ●	500255 ●		
M 13	1,5	506194 ●	506212 ●				
M 14	1,5	501599 ●	500303 ●	501602 ●	500307 ●		
M 15	1,5	506195 ●	506213 ●	503757 ●	503758 ●		
M 16	1,5	503278 ●	500355 ●	505592 ●	500359 ●		
M 17	1,5	503981 ●	506214 ●	503768 ●	503771 ●		
M 18	1,5	501681 ●	500390 ●	501685 ●	500393 ●		
M 19	1,5						
M 20	1,5	501765 ●	500466 ●	501769 ●	500470 ●		
M 21	1,5						
M 22	1,5	501799 ●	500495 ●	501802 ●	500498 ●		
M 24	1,5	501832 ●	500525 ●	501835 ●	500528 ●		
M 25	1,5	501850 ●	500542 ●	501853 ●	503236 ●		
M 26	1,5	501863 ●	503398 ●	501866 ●	500557 ●		
M 27	1,5	501880 ●	500570 ●	501883 ●	500574 ●		
M 28	1,5	505613 ●	505476 ●	501897 ●	500590 ●		
M 30	1,5	501943 ●	500637 ●	501946 ●	500640 ●		
M 32	1,5	501966 ●	500657 ●	501970 ●	500661 ●		
M 33	1,5	503034 ●	503035 ●	501983 ●	500670 ●		
M 34	1,5	506419 ●	506451 ●	501995 ●	500683 ●		
M 35	1,5	505616 ●	500689 ●	502006 ●	500692 ●		
M 36	1,5	502018 ●	505883 ●	502022 ●	500704 ●		
M 38	1,5	502034 ●	500717 ●	502037 ●	500721 ●		

Precision Thread Gages

ISO metric fine thread DIN 13
Gage dimensions acc. DIN ISO 1502



ORDER-CODE →		LD	GD	AD	LD-6G	GD-6G	AD-6G	LD-DLC
d	P mm	6H Plug gage	6H GO plug gage	6H NO GO plug gage	6G Plug gage	6G GO plug gage	6G NO GO plug gage	6H Plug gage GO: DLC hardness HV 0.05 > 5000
↓	↓							
		Part #	Part #	Part #	Part #	Part #	Part #	Part #
M 39	1,5	512170 ●						
M 40	1,5	512212 ●			512214 ●			
M 42	1,5		511114 ●	510386 ●		511115 ●	510388 ●	
M 45	1,5		511124 ●	510397 ●		511126 ●	510398 ●	
M 48	1,5		511140 ●	510412 ●		511142 ●	510413 ●	
M 50	1,5		511166 ●	510436 ●		511167 ●	510437 ●	
M 52	1,5		511176 ●	510446 ●		511177 ●	510447 ●	
M 55	1,5		511184 ●	510454 ●		518531 ●	516615 ●	
M 56	1,5		511189 ●	510459 ●		518947 ●	518946 ●	
M 58	1,5		511195 ●	510466 ●		518532 ●	518533 ●	
M 60	1,5		511213 ●	510483 ●		514812 ●	514813 ●	
M 62	1,5		511216 ●	510488 ●				
M 64	1,5		511219 ●	510493 ●				
M 65	1,5		511223 ●	510496 ●				
M 68	1,5		511229 ●	510501 ●				
M 70	1,5		511240 ●	510508 ●				
M 72	1,5		511243 ●	510511 ●				
M 75	1,5		511247 ●	510513 ●				
M 76	1,5		511250 ●	513382 ●				
M 78	1,5		511252 ●	510517 ●				
M 80	1,5		511274 ●	510543 ●				
M 82	1,5		511278 ●	510546 ●				
M 85	1,5		511280 ●	510547 ●				
M 88	1,5		516722 ●	510551 ●				
M 90	1,5		511296 ●	510561 ●				
M 92	1,5		513057 ●	513056 ●				
M 95	1,5		511302 ●	510566 ●				
M 98	1,5		520042 ●	520054 ●				
M 100	1,5		510837 ●	510089 ●				
M 102	1,5		510840 ●	510092 ●				
M 105	1,5		516858 ●	513006 ●				

Precision Thread Gages

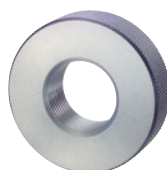
ISO metric fine thread DIN 13
Gage dimensions acc. DIN ISO 1502



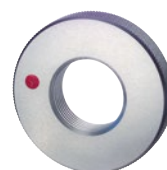
ORDER-CODE →		LD-4H	GD-4H	AD-4H	LD-LH	GD-LH	AD-LH	LD-6G-LH
d	P mm	4H Plug gage	4H GO plug gage	4H NO GO plug gage	6H Left Hand left hand Plug gage	6H Left Hand left hand GO plug gage	6H Left Hand left hand NO GO plug gage	6G Left Hand left hand Plug gage
↓	↓							
		Part #	Part #	Part #	Part #	Part #	Part #	Part #
M 39	1,5							
M 40	1,5	512213 ●			512215 ●			
M 42	1,5		518813 ●	510387 ●		513096 ●	513097 ●	
M 45	1,5		511125 ●	519782 ●		511127 ●	510399 ●	
M 48	1,5		511141 ●	513661 ●		511143 ●	510414 ●	
M 50	1,5		523377 ●	518897 ●		511168 ●	510438 ●	
M 52	1,5		514157 ●	514158 ●		513626 ●	513500 ●	
M 55	1,5		526426 ●	517423 ●		511185 ●	510455 ●	
M 56	1,5		523162 ●	523163 ●		511190 ●	510460 ●	
M 58	1,5		515462 ●	515466 ●		513185 ●	513186 ●	
M 60	1,5		514064 ●	514890 ●		513228 ●	513227 ●	
M 62	1,5					517276 ●	517283 ●	
M 64	1,5					517059 ●	517060 ●	
M 65	1,5					514678 ●	516618 ●	
M 68	1,5					514680 ●	517284 ●	
M 70	1,5					517277 ●	517285 ●	
M 72	1,5					514681 ●	517286 ●	
M 75	1,5					514682 ●	517287 ●	
M 76	1,5							
M 78	1,5					517034 ●	517288 ●	
M 80	1,5					514683 ●	514686 ●	
M 82	1,5					514684 ●	514687 ●	
M 85	1,5					517278 ●	517289 ●	
M 88	1,5							
M 90	1,5							
M 92	1,5							
M 95	1,5							
M 98	1,5							
M 100	1,5							
M 102	1,5							
M 105	1,5							

Precision Thread Gages

ISO metric fine thread DIN 13
Gage dimensions acc. DIN ISO 1502



GR

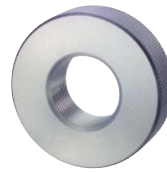


AR

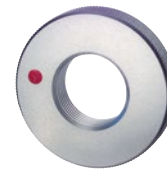
ORDER-CODE →		GR	AR	GR-6e	AR-6e	GR-6h	AR-6h	
d	P mm	6g GO ring gage	6g NO GO ring gage	6e GO ring gage	6e NO GO ring gage	6h GO ring gage	6h NO GO ring gage	
↓	↓							
		Part #	Part #	Part #	Part #	Part #	Part #	
M 39	1,5	502042 ●	500727 ●	502817 ●	500728 ●	502043 ●	500729 ●	
M 40	1,5	502080 ●	500763 ●	502083 ●	500766 ●	502084 ●	503018 ●	
M 42	1,5	502097 ●	500779 ●	502098 ●	500780 ●	502724 ●	502725 ●	
M 45	1,5	502111 ●	500794 ●	502113 ●	500795 ●	502114 ●	505493 ●	
M 48	1,5	502128 ●	500810 ●	502131 ●	503996 ●	503019 ●	500812 ●	
M 50	1,5	502169 ●	500853 ●	502170 ●	500854 ●	502171 ●	500855 ●	
M 52	1,5	502179 ●	500863 ●	502180 ●	503814 ●	505640 ●	506480 ●	
M 55	1,5	502193 ●	500874 ●	502195 ●	506255 ●	505643 ●	506481 ●	
M 56	1,5	502201 ●	500879 ●	505733 ●	502842 ●	505734 ●	505879 ●	
M 58	1,5	502210 ●	500891 ●	503993 ●	505507 ●	505894 ●	505895 ●	
M 60	1,5	502246 ●	500925 ●	502247 ●	500926 ●	505650 ●	505510 ●	
M 62	1,5	502254 ●	500933 ●	506232 ●	506256 ●	504049 ●	504054 ●	
M 64	1,5	502258 ●	500936 ●	505653 ●	505511 ●	505731 ●	506482 ●	
M 65	1,5	502263 ●	500942 ●	502829 ●	506257 ●	502830 ●	504055 ●	
M 68	1,5	502268 ●	500945 ●	503994 ●	503997 ●	502269 ●	505514 ●	
M 70	1,5	502286 ●	500964 ●	503039 ●	505762 ●	506436 ●	506483 ●	
M 72	1,5	502289 ●	500967 ●	506233 ●	506258 ●	503820 ●	505994 ●	
M 75	1,5	502294 ●	500973 ●	506234 ●	506259 ●	506437 ●	506484 ●	
M 76	1,5	502296 ●	500976 ●					
M 78	1,5	502299 ●	500978 ●	506235 ●	506260 ●	506439 ●	506485 ●	
M 80	1,5	502334 ●	501013 ●	503040 ●	501014 ●	506440 ●	506486 ●	
M 82	1,5	502338 ●	501018 ●	506236 ●	506261 ●	506442 ●	506487 ●	
M 85	1,5	502341 ●	501019 ●	505996 ●	505997 ●	506443 ●	506488 ●	
M 88	1,5	502345 ●	501022 ●					
M 90	1,5	502362 ●	503431 ●					
M 92	1,5	502368 ●	501041 ●					
M 95	1,5	502370 ●	501043 ●					
M 98	1,5	520160 ●	520170 ●					
M 100	1,5	501485 ●	500194 ●					
M 102	1,5	501487 ●	500197 ●					
M 105	1,5	501488 ●	500199 ●					

Precision Thread Gages

ISO metric fine thread DIN 13
Gage dimensions acc. DIN ISO 1502



GR

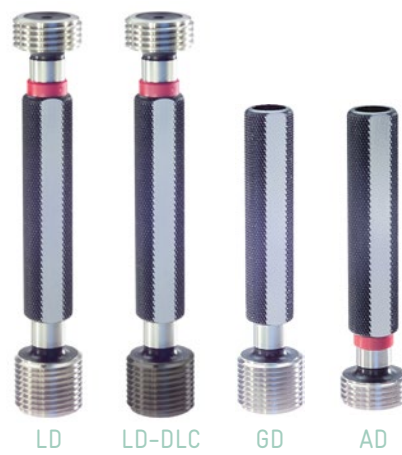


AR

ORDER-CODE →		GR-4h	AR-4h	GR-LH	AR-LH		
d	P mm	4h GO ring gage	4h NO GO ring gage	6g Left Hand left hand GO ring gage	6g Left Hand left hand NO GO ring gage		
↓	↓						
		Part #		Part #		Part #	
M 39	1,5	503372 ●	505482 ●	502044 ●	500730 ●		
M 40	1,5	502082 ●	503159 ●	502085 ●	500767 ●		
M 42	1,5	503484 ●	503485 ●	502099 ●	500781 ●		
M 45	1,5	502112 ●	505492 ●	502115 ●	500796 ●		
M 48	1,5	502130 ●	500811 ●	502132 ●	500814 ●		
M 50	1,5	503446 ●	503447 ●	502172 ●	500856 ●		
M 52	1,5	503243 ●	505810 ●	503464 ●	503463 ●		
M 55	1,5	502194 ●	506459 ●	503500 ●	503499 ●		
M 56	1,5	502203 ●	500881 ●	502204 ●	500882 ●		
M 58	1,5	502211 ●	505506 ●	503988 ●	503995 ●		
M 60	1,5	506421 ●	504051 ●	503005 ●	503667 ●		
M 62	1,5	504047 ●	504052 ●	506223 ●	506242 ●		
M 64	1,5	506425 ●	506464 ●	503468 ●	505884 ●		
M 65	1,5	504010 ●	504011 ●	503989 ●	505513 ●		
M 68	1,5	505742 ●	506467 ●	506224 ●	506243 ●		
M 70	1,5	505658 ●	505518 ●	506225 ●	506244 ●		
M 72	1,5	505795 ●	503153 ●	503990 ●	506245 ●		
M 75	1,5	505759 ●	505522 ●	503991 ●	506246 ●		
M 76	1,5						
M 78	1,5	506427 ●	506469 ●	505906 ●	506247 ●		
M 80	1,5	506429 ●	506471 ●	506226 ●	506248 ●		
M 82	1,5	506431 ●	506472 ●	506227 ●	506249 ●		
M 85	1,5	506432 ●	506474 ●	503992 ●	506250 ●		
M 88	1,5						
M 90	1,5						
M 92	1,5						
M 95	1,5						
M 98	1,5						
M 100	1,5						
M 102	1,5						
M 105	1,5						

Precision Thread Gages

ISO metric fine thread DIN 13
Gage dimensions acc. DIN ISO 1502



ORDER-CODE →		LD	GD	AD	LD-6G	GD-6G	AD-6G	LD-DLC
d	P mm	6H	6H	6H	6G	6G	6G	6H
		Plug gage	GO plug gage	NO GO plug gage	Plug gage	GO plug gage	NO GO plug gage	Plug gage GO: DLC hardness HV 0.05 > 5000
↓	↓							
		Part #	Part #	Part #	Part #	Part #	Part #	Part #
M 108	1,5		520044 ●	520055 ●				
M 110	1,5		510850 ●	513931 ●				
M 112	1,5		510853 ●	510105 ●				
M 115	1,5		520045 ●	520056 ●				
M 118	1,5		520046 ●	520057 ●				
M 120	1,5		520047 ●	520058 ●				
M 122	1,5		516664 ●	520059 ●				
M 125	1,5		520048 ●	520060 ●				
M 128	1,5		510875 ●	510124 ●				
M 130	1,5		517861 ●	517862 ●				
M 132	1,5		518665 ●	520061 ●				
M 135	1,5		520049 ●	517018 ●				
M 138	1,5		520050 ●	520062 ●				
M 140	1,5		520051 ●	520063 ●				
M 142	1,5		518196 ●	520064 ●				
M 145	1,5		520052 ●	520065 ●				
M 148	1,5		520053 ●	520066 ●				
M 150	1,5		518077 ●	518078 ●				
M 18	2	511843 ●			511844 ●			
M 20	2	511923 ●			511924 ●			
M 22	2	511955 ●			511957 ●			
M 24	2	511981 ●			511982 ●			
M 25	2	511992 ●			514267 ●			
M 26	2	512003 ●			512004 ●			
M 27	2	512020 ●			512022 ●			
M 28	2	512032 ●			512033 ●			
M 30	2	512089 ●			512091 ●			
M 32	2	512106 ●			512107 ●			
M 33	2	512120 ●			512121 ●			
M 34	2	512133 ●						
M 35	2	512142 ●						

Precision Thread Gages

ISO metric fine thread DIN 13
Gage dimensions acc. DIN ISO 1502

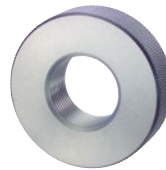
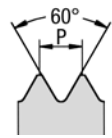


ORDER-CODE →		LD-4H	GD-4H	AD-4H	LD-LH	GD-LH	AD-LH	LD-6G-LH
d	P mm	4H Plug gage	4H GO plug gage	4H NO GO plug gage	6H Left Hand left hand Plug gage	6H Left Hand left hand GO plug gage	6H Left Hand left hand NO GO plug gage	6G Left Hand left hand Plug gage
↓	↓							
		Part #	Part #	Part #	Part #	Part #	Part #	Part #
M 108	1,5							
M 110	1,5							
M 112	1,5							
M 115	1,5							
M 118	1,5							
M 120	1,5							
M 122	1,5							
M 125	1,5							
M 128	1,5							
M 130	1,5							
M 132	1,5							
M 135	1,5							
M 138	1,5							
M 140	1,5							
M 142	1,5							
M 145	1,5							
M 148	1,5							
M 150	1,5							
M 18	2	517377 ●			516775 ●			517247 ●
M 20	2	517040 ●			511926 ●			517248 ●
M 22	2	511956 ●			514641 ●			517249 ●
M 24	2	516786 ●			511983 ●			517250 ●
M 25	2	517378 ●			517263 ●			
M 26	2	517379 ●			517150 ●			
M 27	2	512021 ●			512023 ●			512024 ●
M 28	2	516919 ●			517226 ●			
M 30	2	512090 ●			512092 ●			516790 ●
M 32	2	517380 ●			513678 ●			
M 33	2	513440 ●			513963 ●			512122 ●
M 34	2							
M 35	2							

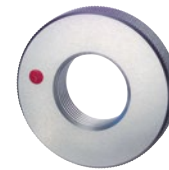
Precision Thread Gages

ISO metric fine thread DIN 13
Gage dimensions acc. DIN ISO 1502

MF



GR

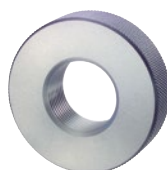


AR

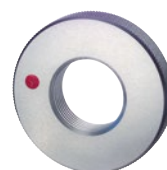
ORDER-CODE →		GR	AR	GR-6e	AR-6e	GR-6h	AR-6h					
d	P mm	6g GO ring gage	6g NO GO ring gage	6e GO ring gage	6e NO GO ring gage	6h GO ring gage	6h NO GO ring gage					
↓	↓											
		Part #		Part #		Part #		Part #		Part #		
M 108	1,5	501491 ●	520171 ●									
M 110	1,5	501509 ●	503404 ●									
M 112	1,5	501511 ●	500217 ●									
M 115	1,5	520161 ●	520172 ●									
M 118	1,5	520162 ●	520173 ●									
M 120	1,5	501554 ●	520174 ●									
M 122	1,5	501556 ●	500261 ●									
M 125	1,5	504424 ●	504425 ●									
M 128	1,5	504216 ●	504426 ●									
M 130	1,5	504299 ●	500273 ●									
M 132	1,5	507817 ●	520175 ●									
M 135	1,5	506628 ●	505452 ●									
M 138	1,5	520163 ●	520176 ●									
M 140	1,5	505888 ●	520177 ●									
M 142	1,5	540441 ●	520178 ●									
M 145	1,5	520165 ●	520179 ●									
M 148	1,5	520168 ●	520180 ●									
M 150	1,5	520169 ●	520181 ●									
M 18	2	501686 ●	500394 ●	502958 ●	502959 ●	501687 ●	500395 ●					
M 20	2	501770 ●	500471 ●	501771 ●	500472 ●	501772 ●	502751 ●					
M 22	2	501803 ●	500499 ●	502961 ●	502962 ●	501805 ●	500501 ●					
M 24	2	501836 ●	500529 ●	501838 ●	500530 ●	501839 ●	500531 ●					
M 25	2	501855 ●	500546 ●	506558 ●	506571 ●	503307 ●	503306 ●					
M 26	2	501867 ●	500558 ●	502764 ●	504068 ●	502766 ●	502765 ●					
M 27	2	501884 ●	500575 ●	501885 ●	500577 ●	502854 ●	500578 ●					
M 28	2	501898 ●	500591 ●	503454 ●	503455 ●	504017 ●	504022 ●					
M 30	2	501947 ●	500641 ●	501949 ●	500643 ●	501950 ●	500644 ●					
M 32	2	501971 ●	500662 ●	501972 ●	500663 ●	504018 ●	504023 ●					
M 33	2	501984 ●	500671 ●	501986 ●	500673 ●	501987 ●	504024 ●					
M 34	2	501996 ●	500684 ●									
M 35	2	502008 ●	500694 ●									

Precision Thread Gages

ISO metric fine thread DIN 13
Gage dimensions acc. DIN ISO 1502



GR

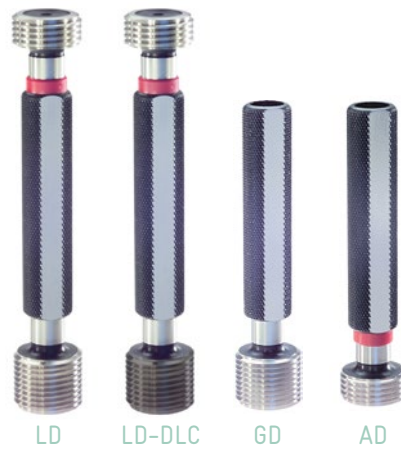


AR

ORDER-CODE →		GR-4h	AR-4h	GR-LH	AR-LH		
d	P mm	4h GO ring gage	4h NO GO ring gage	6g Left Hand left hand GO ring gage	6g Left Hand left hand NO GO ring gage		
↓	↓						
		Part #	Part #	Part #	Part #		
M 108	1,5						
M 110	1,5						
M 112	1,5						
M 115	1,5						
M 118	1,5						
M 120	1,5						
M 122	1,5						
M 125	1,5						
M 128	1,5						
M 130	1,5						
M 132	1,5						
M 135	1,5						
M 138	1,5						
M 140	1,5						
M 142	1,5						
M 145	1,5						
M 148	1,5						
M 150	1,5						
M 18	2	504064 ●	504012 ●	505597 ●	505458 ●		
M 20	2	504065 ●	504013 ●	501773 ●	500473 ●		
M 22	2	501804 ●	500500 ●	504058 ●	504061 ●		
M 24	2	501837 ●	502733 ●	501840 ●	500532 ●		
M 25	2	506543 ●	506271 ●	506521 ●	505473 ●		
M 26	2	506544 ●	506272 ●	506522 ●	505474 ●		
M 27	2	503639 ●	500576 ●	501886 ●	500579 ●		
M 28	2	506545 ●	506273 ●	506523 ●	506530 ●		
M 30	2	501948 ●	500642 ●	501951 ●	500645 ●		
M 32	2	506546 ●	506274 ●	503328 ●	503326 ●		
M 33	2	501985 ●	500672 ●	503083 ●	500674 ●		
M 34	2						
M 35	2						

Precision Thread Gages

ISO metric fine thread DIN 13
Gage dimensions acc. DIN ISO 1502



ORDER-CODE →		LD	GD	AD	LD-6G	GD-6G	AD-6G	LD-DLC
d	P mm	6H Plug gage	6H GO plug gage	6H NO GO plug gage	6G Plug gage	6G GO plug gage	6G NO GO plug gage	6H Plug gage GO: DLC hardness HV 0.05 > 5000
↓	↓							
		Part #	Part #	Part #	Part #	Part #	Part #	Part #
M 36	2	512153 ●			512154 ●			
M 38	2	512165 ●			521113 ●			
M 39	2	512173 ●			512174 ●			
M 40	2	512216 ●			513465 ●			
M 42	2		511116 ●	510389 ●		511117 ●	510390 ●	
M 45	2		511128 ●	510400 ●		516705 ●	516609 ●	
M 48	2		511144 ●	510415 ●		511146 ●	510416 ●	
M 50	2		511169 ●	510439 ●		526427 ●	524417 ●	
M 52	2		511178 ●	510448 ●		514336 ●	510449 ●	
M 55	2		511186 ●	510456 ●		513205 ●	513206 ●	
M 56	2		511191 ●	510461 ●		526428 ●	524418 ●	
M 58	2		511196 ●	510467 ●		526429 ●	524419 ●	
M 60	2		511214 ●	510484 ●		513539 ●	513540 ●	
M 62	2		511217 ●	510489 ●		526523 ●	524475 ●	
M 64	2		511220 ●	510494 ●		523683 ●	523684 ●	
M 65	2		511224 ●	510497 ●		526515 ●	526516 ●	
M 68	2		511230 ●	510502 ●		526517 ●	526518 ●	
M 70	2		511241 ●	510509 ●		516911 ●	513441 ●	
M 72	2		511244 ●	510512 ●		518205 ●	524469 ●	
M 75	2		511248 ●	510514 ●		526519 ●	524470 ●	
M 76	2		511251 ●	510516 ●		518362 ●	517395 ●	
M 78	2		511253 ●	510518 ●		517903 ●	517904 ●	
M 80	2		511275 ●	510544 ●		511276 ●	519864 ●	
M 82	2		511279 ●	516627 ●		526520 ●	524471 ●	
M 85	2		511281 ●	510548 ●		513955 ●	517009 ●	
M 88	2		511284 ●	510552 ●				
M 90	2		511297 ●	510562 ●				
M 92	2		511301 ●	510565 ●				
M 95	2		511303 ●	510567 ●				
M 98	2		511304 ●	510568 ●				
M 100	2		510838 ●	510090 ●				

Precision Thread Gages

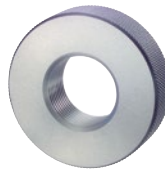
ISO metric fine thread DIN 13
Gage dimensions acc. DIN ISO 1502



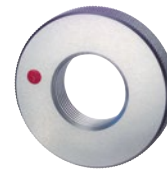
ORDER-CODE →		LD-4H	GD-4H	AD-4H	LD-LH	GD-LH	AD-LH	LD-6G-LH
d	P mm	4H Plug gage	4H GO plug gage	4H NO GO plug gage	6H Left Hand left hand Plug gage	6H Left Hand left hand GO plug gage	6H Left Hand left hand NO GO plug gage	6G Left Hand left hand Plug gage
↓	↓							
		Part #		Part #	Part #	Part #	Part #	Part #
M 36	2	514345 ●			512155 ●			514656 ●
M 38	2	517381 ●			517264 ●			
M 39	2	517382 ●			514232 ●			517251 ●
M 40	2	517383 ●			514216 ●			
M 42	2		515066 ●	517118 ●		514230 ●	514231 ●	
M 45	2		515067 ●	515068 ●		511129 ●	510401 ●	
M 48	2		511145 ●	516610 ●		511147 ●	510417 ●	
M 50	2		526430 ●	524420 ●		511170 ●	510440 ●	
M 52	2		514105 ●	515069 ●		514132 ●	514133 ●	
M 55	2		517063 ●	517064 ●		516709 ●	517375 ●	
M 56	2		526431 ●	524421 ●		514712 ●	514714 ●	
M 58	2		526432 ●	524422 ●		516711 ●	516617 ●	
M 60	2		526433 ●	524423 ●		514713 ●	510486 ●	
M 62	2					517374 ●	517376 ●	
M 64	2					511221 ●	517845 ●	
M 65	2					516714 ●	516619 ●	
M 68	2					516862 ●	516621 ●	
M 70	2					513474 ●	516918 ●	
M 72	2					523819 ●	523820 ●	
M 75	2					516718 ●	516922 ●	
M 76	2					516076 ●	516077 ●	
M 78	2					526521 ●	524472 ●	
M 80	2					516719 ●	516625 ●	
M 82	2					517699 ●	524473 ●	
M 85	2					516721 ●	516628 ●	
M 88	2							
M 90	2							
M 92	2							
M 95	2							
M 98	2							
M 100	2							

Precision Thread Gages

ISO metric fine thread DIN 13
Gage dimensions acc. DIN ISO 1502



GR

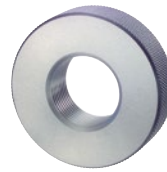


AR

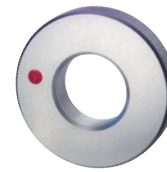
ORDER-CODE →		GR	AR	GR-6e	AR-6e	GR-6h	AR-6h	
d	P mm	6g GO ring gage	6g NO GO ring gage	6e GO ring gage	6e NO GO ring gage	6h GO ring gage	6h NO GO ring gage	
↓	↓							
		Part #		Part #		Part #		Part #
M 36	2	502023 ●	500705 ●	502024 ●	500706 ●	502025 ●	503266 ●	
M 38	2	502038 ●	500722 ●	505959 ●	505960 ●	505995 ●	506295 ●	
M 39	2	502045 ●	500731 ●	506559 ●	506572 ●	505619 ●	505483 ●	
M 40	2	502086 ●	500768 ●	505624 ●	505489 ●	502087 ●	506296 ●	
M 42	2	502100 ●	500782 ●	505627 ●	505490 ●	505859 ●	505860 ●	
M 45	2	502116 ●	500797 ●	502117 ●	500798 ●	502864 ●	505495 ●	
M 48	2	502133 ●	500815 ●	502134 ●	500816 ●	503589 ●	504025 ●	
M 50	2	502173 ●	500857 ●	503081 ●	505770 ●	503536 ●	505501 ●	
M 52	2	502181 ●	500864 ●	505641 ●	500867 ●	504019 ●	506297 ●	
M 55	2	502196 ●	500875 ●	506560 ●	506573 ●	503963 ●	503964 ●	
M 56	2	502205 ●	500883 ●	505645 ●	500885 ●	506287 ●	506298 ●	
M 58	2	502212 ●	500892 ●	506561 ●	506533 ●	505873 ●	505874 ●	
M 60	2	502248 ●	500927 ●	502249 ●	500928 ●	502729 ●	502730 ●	
M 62	2	502255 ●	500934 ●	506562 ●	506534 ●	506288 ●	506300 ●	
M 64	2	502259 ●	500937 ●	506563 ●	506535 ●	506289 ●	506301 ●	
M 65	2	502264 ●	500943 ●	506564 ●	506536 ●	504020 ●	504026 ●	
M 68	2	502270 ●	500946 ●					
M 70	2	502287 ●	500965 ●					
M 72	2	502290 ●	500968 ●					
M 75	2	502295 ●	500974 ●					
M 76	2	502297 ●	500977 ●					
M 78	2	502300 ●	500979 ●					
M 80	2	502335 ●	501015 ●					
M 82	2	502339 ●	505531 ●					
M 85	2	502342 ●	502736 ●					
M 88	2	502346 ●	501023 ●					
M 90	2	502363 ●	501038 ●					
M 92	2	502369 ●	501042 ●					
M 95	2	502371 ●	501044 ●					
M 98	2	502372 ●	501045 ●					
M 100	2	501486 ●	500195 ●					

Precision Thread Gages

ISO metric fine thread DIN 13
Gage dimensions acc. DIN ISO 1502



GR

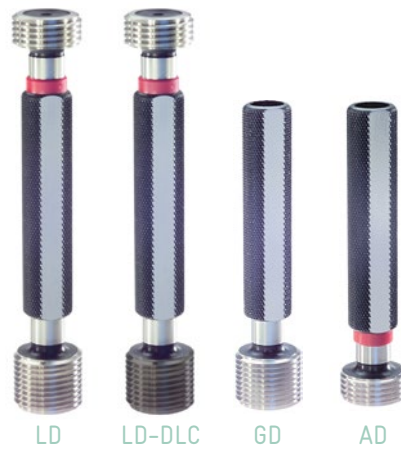


AR

ORDER-CODE →		GR-4h	AR-4h	GR-LH	AR-LH		
d	P mm	4h GO ring gage	4h NO GO ring gage	6g Left Hand left hand GO ring gage	6g Left Hand left hand NO GO ring gage		
↓	↓						
		Part #		Part #		Part #	
M 36	2	504066 ●	504014 ●	502026 ●	500707 ●		
M 38	2	506547 ●	506275 ●	505618 ●	505481 ●		
M 39	2	504067 ●	504015 ●	505620 ●	500732 ●		
M 40	2	506548 ●	506276 ●	505625 ●	500769 ●		
M 42	2	502101 ●	500783 ●	504059 ●	504062 ●		
M 45	2	505628 ●	505934 ●	502118 ●	500799 ●		
M 48	2	503809 ●	504016 ●	505630 ●	500817 ●		
M 50	2	506549 ●	506277 ●	505637 ●	500858 ●		
M 52	2	502183 ●	500866 ●	502184 ●	500868 ●		
M 55	2	502197 ●	500876 ●	505644 ●	505504 ●		
M 56	2	502896 ●	500884 ●	502206 ●	500886 ●		
M 58	2	506550 ●	506278 ●	505646 ●	500893 ●		
M 60	2	505651 ●	505804 ●	502250 ●	500929 ●		
M 62	2	506551 ●	506279 ●	506524 ●	506531 ●		
M 64	2	502260 ●	500938 ●	505654 ●	505512 ●		
M 65	2	506552 ●	506280 ●	503769 ●	506532 ●		
M 68	2	506553 ●	506281 ●	505723 ●	505516 ●		
M 70	2	506554 ●	506282 ●	505794 ●	505520 ●		
M 72	2			503748 ●	543591 ●		
M 75	2			505661 ●	505523 ●		
M 76	2			504365 ●	505223 ●		
M 78	2			547291 ●	540981 ●		
M 80	2			505668 ●	505530 ●		
M 82	2			543164 ●	543165 ●		
M 85	2			505669 ●	505533 ●		
M 88	2						
M 90	2						
M 92	2						
M 95	2						
M 98	2						
M 100	2						

Precision Thread Gages

ISO metric fine thread DIN 13
Gage dimensions acc. DIN ISO 1502



ORDER-CODE →		LD	GD	AD	LD-6G	GD-6G	AD-6G	LD-DLC
d	P mm	6H	6H	6H	6G	6G	6G	6H
		Plug gage	GO plug gage	NO GO plug gage	Plug gage	GO plug gage	NO GO plug gage	Plug gage GO: DLC hardness HV 0.05 > 5000
↓	↓							
		Part #	Part #	Part #	Part #	Part #	Part #	Part #
M 102	2		526463 ●	516575 ●				
M 105	2		510842 ●	510093 ●				
M 108	2		520069 ●	510095 ●				
M 110	2		510851 ●	510103 ●				
M 112	2		516663 ●	516577 ●				
M 115	2		510854 ●	513918 ●				
M 118	2		518905 ●	519513 ●				
M 120	2		510872 ●	510122 ●				
M 122	2		510873 ●	516578 ●				
M 125	2		515033 ●	514978 ●				
M 128	2		514954 ●	520077 ●				
M 130	2		514063 ●	514719 ●				
M 132	2		510880 ●	510129 ●				
M 135	2		510881 ●	520078 ●				
M 138	2		520071 ●	520079 ●				
M 140	2		510897 ●	518882 ●				
M 142	2		516669 ●	520081 ●				
M 145	2		518907 ●	519516 ●				
M 148	2		516670 ●	520083 ●				
M 150	2		510904 ●	510149 ●				
M 30	3	512094 ●						
M 33	3	512124 ●						
M 36	3	512156 ●						
M 39	3	512175 ●						
M 40	3	512217 ●						
M 42	3		511118 ●	510391 ●				
M 45	3		511130 ●	510402 ●				
M 48	3		511148 ●	510418 ●				
M 50	3		513534 ●	510441 ●				
M 52	3		511179 ●	510450 ●				
M 55	3		516710 ●	516616 ●				

Precision Thread Gages

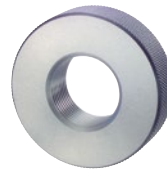
ISO metric fine thread DIN 13
Gage dimensions acc. DIN ISO 1502



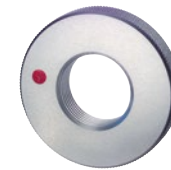
ORDER-CODE →		LD-4H	GD-4H	AD-4H	LD-LH	GD-LH	AD-LH	LD-6G-LH	
d	P mm	4H Plug gage	4H GO plug gage	4H NO GO plug gage	6H Left Hand left hand Plug gage	6H Left Hand left hand GO plug gage	6H Left Hand left hand NO GO plug gage	6G Left Hand left hand Plug gage	
↓	↓								
		Part #	Part #	Part #	Part #	Part #	Part #	Part #	
M 102	2								
M 105	2								
M 108	2								
M 110	2								
M 112	2								
M 115	2								
M 118	2								
M 120	2								
M 122	2								
M 125	2								
M 128	2								
M 130	2								
M 132	2								
M 135	2								
M 138	2								
M 140	2								
M 142	2								
M 145	2								
M 148	2								
M 150	2								
M 30	3				517265	●			
M 33	3				514642	●			
M 36	3				513409	●			
M 39	3				517266	●			
M 40	3								
M 42	3					514248	●	514249	●
M 45	3					517020	●	517303	●
M 48	3					513874	●	513875	●
M 50	3								
M 52	3					517301	●	517304	●
M 55	3								

Precision Thread Gages

ISO metric fine thread DIN 13
Gage dimensions acc. DIN ISO 1502



GR

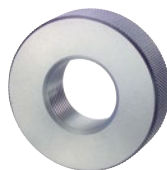


AR

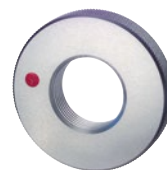
ORDER-CODE →		GR	AR	GR-6e	AR-6e	GR-6h	AR-6h	
d	P mm	6g GO ring gage	6g NO GO ring gage	6e GO ring gage	6e NO GO ring gage	6h GO ring gage	6h NO GO ring gage	
↓	↓							
		Part #		Part #		Part #		Part #
M 102	2	520182 ●	500198 ●					
M 105	2	501489 ●	500200 ●					
M 108	2	520183 ●	520198 ●					
M 110	2	501510 ●	500216 ●					
M 112	2	520184 ●	520199 ●					
M 115	2	503088 ●	504354 ●					
M 118	2	503609 ●	520200 ●					
M 120	2	501555 ●	500260 ●					
M 122	2	505580 ●	505450 ●					
M 125	2	501557 ●	504256 ●					
M 128	2	506819 ●	520201 ●					
M 130	2	501568 ●	500274 ●					
M 132	2	501569 ●	500275 ●					
M 135	2	501570 ●	520202 ●					
M 138	2	520185 ●	520203 ●					
M 140	2	501607 ●	520204 ●					
M 142	2	505588 ●	520205 ●					
M 145	2	505589 ●	500311 ●					
M 148	2	507441 ●	520206 ●					
M 150	2	503523 ●	520207 ●					
M 30	3	501952 ●	503223 ●					
M 33	3	501988 ●	500675 ●					
M 36	3	502027 ●	500708 ●					
M 39	3	502046 ●	500733 ●					
M 40	3	502088 ●	500770 ●					
M 42	3	502102 ●	500785 ●					
M 45	3	502119 ●	500800 ●					
M 48	3	502135 ●	500818 ●					
M 50	3	502174 ●	503216 ●					
M 52	3	502185 ●	500869 ●					
M 55	3	502198 ●	505505 ●					

Precision Thread Gages

ISO metric fine thread DIN 13
Gage dimensions acc. DIN ISO 1502



GR

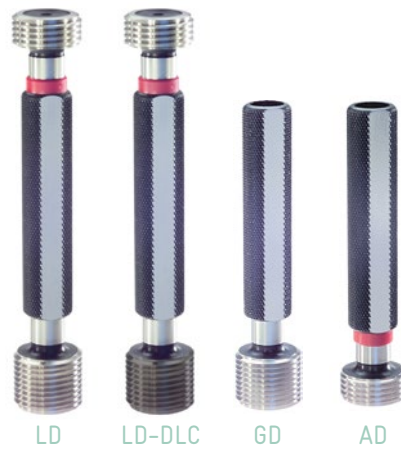


AR

ORDER-CODE →		GR-4h	AR-4h	GR-LH	AR-LH	
d	P mm	4h GO ring gage	4h NO GO ring gage	6g Left Hand left hand GO ring gage	6g Left Hand left hand NO GO ring gage	
↓	↓					
		Part #	Part #	Part #	Part #	
M 102	2					
M 105	2					
M 108	2					
M 110	2					
M 112	2					
M 115	2					
M 118	2					
M 120	2					
M 122	2					
M 125	2					
M 128	2					
M 130	2					
M 132	2					
M 135	2					
M 138	2					
M 140	2					
M 142	2					
M 145	2					
M 148	2					
M 150	2					
M 30	3			506308 ●	506314 ●	
M 33	3			506309 ●	506315 ●	
M 36	3			502974 ●	500709 ●	
M 39	3			505621 ●	505484 ●	
M 40	3					
M 42	3			504029 ●	505491 ●	
M 45	3			506310 ●	505496 ●	
M 48	3			503406 ●	503407 ●	
M 50	3					
M 52	3			503830 ●	505503 ●	
M 55	3					

Precision Thread Gages

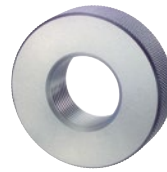
ISO metric fine thread DIN 13
Gage dimensions acc. DIN ISO 1502



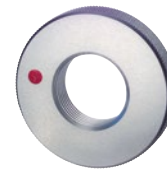
ORDER-CODE →		LD	GD	AD	LD-6G	GD-6G	AD-6G	LD-DLC
d	P mm	6H Plug gage	6H GO plug gage	6H NO GO plug gage	6G Plug gage	6G GO plug gage	6G NO GO plug gage	6H Plug gage GO: DLC hardness HV 0.05 > 5000
↓	↓							
		Part #	Part #	Part #	Part #	Part #	Part #	Part #
M 56	3		511192 ●	510462 ●				
M 58	3		511197 ●	510468 ●				
M 60	3		513225 ●	513226 ●				
M 62	3		513529 ●	513528 ●				
M 64	3		513530 ●	513531 ●				
M 65	3		511225 ●	510498 ●				
M 68	3		511231 ●	513536 ●				
M 70	3		520084 ●	520102 ●				
M 72	3		513125 ●	513126 ●				
M 75	3		516235 ●	510515 ●				
M 76	3		520085 ●	520103 ●				
M 80	3		516720 ●	516626 ●				
M 85	3		511282 ●	510549 ●				
M 90	3		511298 ●	510563 ●				
M 95	3		516856 ●	516857 ●				
M 100	3		510839 ●	510091 ●				
M 105	3		517703 ●	517741 ●				
M 110	3		510852 ●	510104 ●				
M 115	3		517089 ●	517090 ●				
M 120	3		516880 ●	520104 ●				
M 125	3		510874 ●	510123 ●				
M 130	3		513756 ●	513757 ●				
M 135	3		516891 ●	516892 ●				
M 140	3		510898 ●	510145 ●				
M 145	3		512978 ●	512979 ●				
M 150	3		520086 ●	520105 ●				
M 52	4		513507 ●	513506 ●				
M 55	4		516924 ●	516925 ●				
M 56	4		511193 ●	510463 ●				
M 58	4		520087 ●	520106 ●				
M 60	4		511215 ●	510487 ●				

Precision Thread Gages

ISO metric fine thread DIN 13
Gage dimensions acc. DIN ISO 1502



GR



AR

ORDER-CODE →		GR	AR	GR-6e	AR-6e	GR-6h	AR-6h	
d	P mm	6g GO ring gage	6g NO GO ring gage	6e GO ring gage	6e NO GO ring gage	6h GO ring gage	6h NO GO ring gage	
↓	↓							
		Part #		Part #		Part #		Part #
M 56	3	502207 ●	500887 ●					
M 58	3	502213 ●	500894 ●					
M 60	3	502251 ●	500930 ●					
M 62	3	503206 ●	503205 ●					
M 64	3	502261 ●	500939 ●					
M 65	3	502265 ●	520208 ●					
M 68	3	503202 ●	500947 ●					
M 70	3	504108 ●	520209 ●					
M 72	3	502910 ●	502909 ●					
M 75	3	503048 ●	500975 ●					
M 76	3	503725 ●	505524 ●					
M 80	3	502336 ●	520210 ●					
M 85	3	503743 ●	503744 ●					
M 90	3	502365 ●	501040 ●					
M 95	3	520186 ●	520211 ●					
M 100	3	505574 ●	507833 ●					
M 105	3	501490 ●	505440 ●					
M 110	3	505576 ●	505445 ●					
M 115	3	503745 ●	520212 ●					
M 120	3	502897 ●	505449 ●					
M 125	3	503460 ●	540068 ●					
M 130	3	507147 ●	520214 ●					
M 135	3	501571 ●	500276 ●					
M 140	3	503742 ●	504205 ●					
M 145	3	501608 ●	500312 ●					
M 150	3	520187 ●	520215 ●					
M 52	4	503164 ●	503177 ●					
M 55	4	505798 ●	505799 ●					
M 56	4	502208 ●	500888 ●					
M 58	4	520188 ●	520216 ●					
M 60	4	502252 ●	503217 ●					

Precision Thread Gages

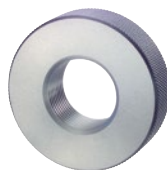
ISO metric fine thread DIN 13
Gage dimensions acc. DIN ISO 1502



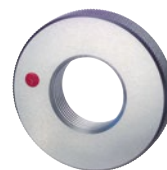
ORDER-CODE →		LD	GD	AD	LD-6G	GD-6G	AD-6G	LD-DLC
d	P mm	6H Plug gage	6H GO plug gage	6H NO GO plug gage	6G Plug gage	6G GO plug gage	6G NO GO plug gage	6H Plug gage GO: DLC hardness HV 0.05 > 5000
↓	↓							
		Part #	Part #	Part #	Part #	Part #	Part #	Part #
M 62	4		513532 ●	510490 ●				
M 64	4		511222 ●	510495 ●				
M 65	4		520088 ●	514098 ●				
M 68	4		518916 ●	520107 ●				
M 70	4		514296 ●	517405 ●				
M 72	4		511245 ●	518830 ●				
M 75	4		520090 ●	520109 ●				
M 76	4		517001 ●	520110 ●				
M 80	4		511277 ●	510545 ●				
M 85	4		511283 ●	510550 ●				
M 90	4		516724 ●	520111 ●				
M 95	4		517005 ●	520112 ●				
M 100	4		514222 ●	517074 ●				
M 105	4		514223 ●	516044 ●				
M 110	4		513658 ●	513659 ●				
M 115	4		520091 ●	520113 ●				
M 120	4		517002 ●	517003 ●				
M 125	4		516665 ●	520114 ●				
M 130	4		520092 ●	520115 ●				
M 135	4		520093 ●	520116 ●				
M 140	4		520094 ●	520117 ●				
M 145	4		520095 ●	520118 ●				
M 150	4		517006 ●	520119 ●				
M 70	6		520096 ●	520120 ●				
M 72	6		511242 ●	510510 ●				
M 76	6		518716 ●	520122 ●				
M 80	6		514186 ●	510542 ●				
M 85	6		515444 ●	520123 ●				
M 90	6		511299 ●	516631 ●				
M 95	6		520100 ●	520124 ●				
M 100	6		520101 ●	520125 ●				

Precision Thread Gages

ISO metric fine thread DIN 13
Gage dimensions acc. DIN ISO 1502



GR

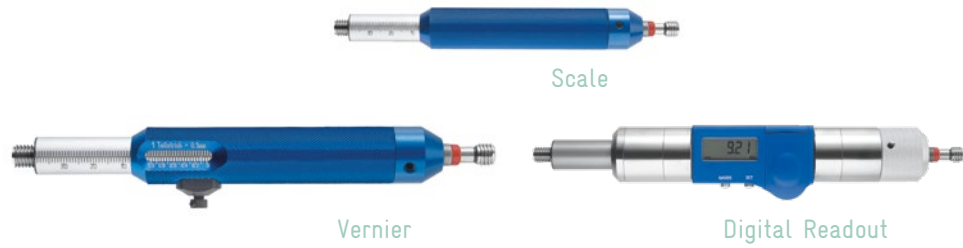


AR

ORDER-CODE →		GR	AR	GR-6e	AR-6e	GR-6h	AR-6h	
d	P mm	6g GO ring gage	6g NO GO ring gage	6e GO ring gage	6e NO GO ring gage	6h GO ring gage	6h NO GO ring gage	
↓	↓							
		Part #	Part #	Part #	Part #	Part #	Part #	
M 62	4	520189 ●	520217 ●					
M 64	4	502262 ●	500940 ●					
M 65	4	520190 ●	520218 ●					
M 68	4	503214 ●	503215 ●					
M 70	4	505963 ●	505964 ●					
M 72	4	502291 ●	500969 ●					
M 75	4	520191 ●	520219 ●					
M 76	4	503099 ●	505525 ●					
M 80	4	502337 ●	501016 ●					
M 85	4	502343 ●	501020 ●					
M 90	4	502366 ●	505536 ●					
M 95	4	505952 ●	520220 ●					
M 100	4	502887 ●	500196 ●					
M 105	4	505953 ●	520221 ●					
M 110	4	503568 ●	543521 ●					
M 115	4	520192 ●	520223 ●					
M 120	4	503612 ●	520224 ●					
M 125	4	505581 ●	520225 ●					
M 130	4	505584 ●	520226 ●					
M 135	4	520193 ●	520227 ●					
M 140	4	505974 ●	505975 ●					
M 145	4	520194 ●	520228 ●					
M 150	4	505956 ●	520229 ●					
M 70	6	505659 ●	505521 ●					
M 72	6	520195 ●	520230 ●					
M 76	6	520196 ●	520231 ●					
M 80	6	503354 ●	501017 ●					
M 85	6	504273 ●	507014 ●					
M 90	6	502367 ●	520232 ●					
M 95	6	520197 ●	520233 ●					
M 100	6	503517 ●	503518 ●					

Precision Thread Gages - MultiCheck

ISO metric fine thread DIN 13 Gage dimensions acc.
 DIN ISO 1502
 Gaging depth up to 4 x D
 max. 80 mm



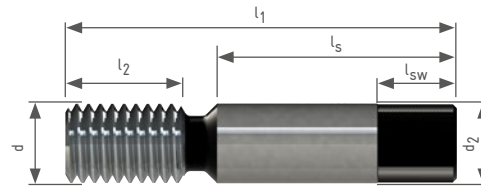
ORDER-CODE →			MCS		MCN		MCD		
Accuracy of reading			0,5 mm		0,1 mm		0,01 mm		
d	P mm	System size	6H Scale		6H Vernier		Digital 6H		
↓							Digital readout incl. inspection certificate 		
			Part #		Part #		Part #		
M 8	1	20	590044	●	590274	●	28	590122	●
M 10	1	20	590045	●	590277	●	28	590123	●
M 10	1,25	20	590089	●	590278	●	28	590166	●
M 12	1	25	590046	●	590279	●	35	590167	●
M 12	1,25	25	590068	●	590280	●	35	590168	●
M 12	1,5	25	590008	●	590281	●	35	590169	●
M 14	1	25	590090	xx	590282	xx	35	590170	xx
M 14	1,25	25	590091	xx	590283	xx	35	590171	xx
M 14	1,5	25	590016	●	590284	●	35	590124	●
M 16	1	28	590092	xx	590285	xx	35	590172	xx
M 16	1,5	28	590011	●	590286	●	35	590173	●
M 18	1	28	590093	xx	590287	xx	35	590174	xx
M 18	1,5	28	590094	●	590288	●	35	590175	●
M 20	1	36	590096	xx	590290	xx	35	590177	xx
M 20	1,5	36	590097	xx	590291	xx	35	590178	xx
M 22	1	36	590099	xx	590293	xx	35	590180	xx
M 22	1,5	36	590100	xx	590294	xx	35	590181	xx
M 24	1	36	590020	xx	590236	xx	35	590183	xx
M 24	1,5	36	590102	xx	590296	xx	35	590184	xx
M 30	1,5	43	590104	xx	590298	xx	35	590186	xx


Thread-Coordinate Gage Rod

ISO metric fine thread DIN 13

Specification: Pitch correction in the thread
Fitted in two thread flanks for centric mounting

Usage: Determination of position and angularity
of the thread via 3D measuring machine



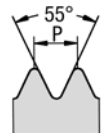
ORDER-CODE								KD	
d	P mm	d ₂	l ₁	l ₂	l _s	sw	l _{sw}	Coordinate gage rod	
↓	↓								
								Part #	
M 8	1	8	37	10	24	6	8	220641	●
M 10	1	10	43	10	30	8	10	220642	●
M 12	1	12	49	10	36	10	12	220229	●
M 12	1,5	12	55	15	36	10	12	220643	●
M 14	1,5	14	61	15	42	12	14	220646	●
M 16	1	16	61	10	48	14	16	220647	●
M 16	1,5	16	67	15	48	14	16	220648	●

Precision Thread Gages

Whitworth pipe thread DIN EN ISO 228
Gage dimensions acc. DIN EN ISO 228-2



G



ORDER-CODE →			LD	GD	AD	LD-DLC
d	P Gg/1" tpi	Ø d mm	Plug gage	GO plug gage	NO GO plug gage	Plug gage GO: DLC hardness HV 0.05 > 5000
↓						
			Part #	Part #	Part #	Part #
G 1/16"	28	7,723	511577 ●			
G 1/8"	28	9,728	511589 ●			512727 ●
G 1/4"	19	13,157	511584 ●			512726 ●
G 3/8"	19	16,662	511597 ●			512729 ●
G 1/2"	14	20,955	511578 ●			512725 ●
G 5/8"	14	22,911	511601 ●			
G 3/4"	14	26,441	511593 ●			512728 ●
G 7/8"	14	30,201	511602 ●			
G 1"	11	33,249	511573 ●			512724 ●
G 1 1/8"	11	37,897	511576 ●			
G 1 1/4"	11	41,910		510764 ●	510022 ●	
G 1 1/2"	11	47,803		510763 ●	510019 ●	
G 1 3/4"	11	53,746		510767 ●	510025 ●	
G 2"	11	59,614		510786 ●	510035 ●	
G 2 1/4"	11	65,710		510789 ●	510037 ●	
G 2 1/2"	11	75,184		510788 ●	510036 ●	
G 2 3/4"	11	81,534		510790 ●	510038 ●	
G 3"	11	87,884		510791 ●	510039 ●	
G 3 1/2"	11	100,330		510792 ●	510040 ●	
G 4"	11	113,030		510798 ●	510044 ●	
G 4 1/2"	11	125,730		520129 ●	520131 ●	
G 5"	11	138,430		516657 ●	520132 ●	
G 5 1/2"	11	151,130		520130 ●	520133 ●	
G 6"	11	163,830		516658 ●	516573 ●	

Precision Thread Gages

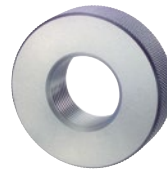
Whitworth pipe thread DIN EN ISO 228
Gage dimensions acc. DIN EN ISO 228-2



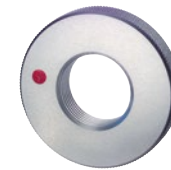
ORDER-CODE →			LD-LH	GD-LH	AD-LH		
d	P Gg/1" tpi	Ø d mm	Left Hand left hand Plug gage	Left Hand left hand GO plug gage	Left Hand left hand NO GO plug gage		
↓							
			Part #	Part #	Part #		
G 1/16"	28	7,723					
G 1/8"	28	9,728	511592 ●				
G 1/4"	19	13,157	511588 ●				
G 3/8"	19	16,662	511600 ●				
G 1/2"	14	20,955	511583 ●				
G 5/8"	14	22,911	514699 ●				
G 3/4"	14	26,441	511596 ●				
G 7/8"	14	30,201	514044 ●				
G 1"	11	33,249	511575 ●				
G 1 1/8"	11	37,897	517310 ●				
G 1 1/4"	11	41,910		510765 ●	510023 ●		
G 1 1/2"	11	47,803		513942 ●	510021 ●		
G 1 3/4"	11	53,746		517311 ●	514700 ●		
G 2"	11	59,614		510787 ●	516571 ●		
G 2 1/4"	11	65,710		517312 ●	517318 ●		
G 2 1/2"	11	75,184		517313 ●	517319 ●		
G 2 3/4"	11	81,534		517314 ●	517320 ●		
G 3"	11	87,884		517315 ●	517321 ●		
G 3 1/2"	11	100,330					
G 4"	11	113,030					
G 4 1/2"	11	125,730					
G 5"	11	138,430					
G 5 1/2"	11	151,130					
G 6"	11	163,830					

Precision Thread Gages

Whitworth pipe thread DIN EN ISO 228
Gage dimensions acc. DIN EN ISO 228-2



GR

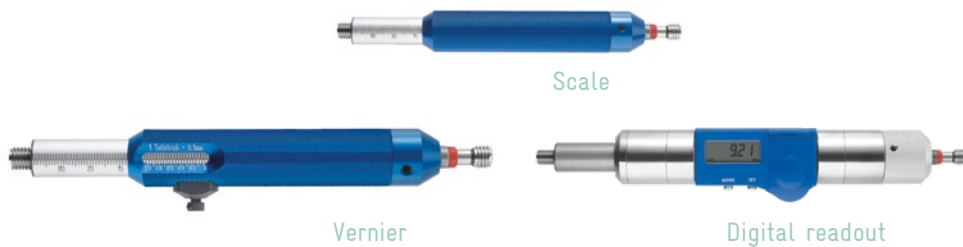





AR

ORDER-CODE →			GR	AR	GR-B	AR-B	GR-LH	AR-LH
d	P Gg/1" tpi	Ø d mm	Tol. A tol. A GO ring gage	Tol. A tol. A NO GO ring gage	Tol. B tol. B GO ring gage	Tol. B tol. B NO GO ring gage	Tol. A Left Hand tol. A left hand GO ring gage	Tol. A Left Hand tol. A left hand NO GO ring gage
↓								
			Part #	Part #	Part #	Part #	Part #	Part #
G 1/16"	28	7,723	501361 ●	500066 ●				
G 1/8"	28	9,728	501376 ●	500083 ●	501377 ●	500084 ●	501380 ●	500086 ●
G 1/4"	19	13,157	501371 ●	500077 ●	501372 ●	500078 ●	501375 ●	500082 ●
G 3/8"	19	16,662	501399 ●	500104 ●	501400 ●	500105 ●	501404 ●	500109 ●
G 1/2"	14	20,955	501362 ●	500067 ●	501363 ●	500068 ●	501370 ●	500076 ●
G 5/8"	14	22,911	501408 ●	500112 ●			501412 ●	500116 ●
G 3/4"	14	26,441	501391 ●	500098 ●	501392 ●	500099 ●	501398 ●	500103 ●
G 7/8"	14	30,201	501414 ●	500117 ●			505910 ●	505911 ●
G 1"	11	33,249	501337 ●	500043 ●	501338 ●	500044 ●	501344 ●	500050 ●
G 1 1/8"	11	37,897	501358 ●	500063 ●			505562 ●	506393 ●
G 1 1/4"	11	41,910	501352 ●	500056 ●			503057 ●	503056 ●
G 1 1/2"	11	47,803	501346 ●	500052 ●	501347 ●	503042 ●	501351 ●	505430 ●
G 1 3/4"	11	53,746	501359 ●	500064 ●			506387 ●	506394 ●
G 2"	11	59,614	501381 ●	500087 ●			505564 ●	505432 ●
G 2 1/4"	11	65,710	501386 ●	500092 ●			506388 ●	506395 ●
G 2 1/2"	11	75,184	501385 ●	500090 ●			505565 ●	505433 ●
G 2 3/4"	11	81,534	501388 ●	500094 ●			506389 ●	506396 ●
G 3"	11	87,884	501389 ●	500096 ●			506390 ●	506397 ●
G 3 1/2"	11	100,330	501390 ●	500097 ●				
G 4"	11	113,030	501405 ●	500110 ●				
G 4 1/2"	11	125,730	541338 ●	540586 ●				
G 5"	11	138,430	501407 ●	540587 ●				
G 5 1/2"	11	151,130	505329 ●	505330 ●				
G 6"	11	163,830	501413 ●	540590 ●				

Precision Thread Gages - MultiCheck

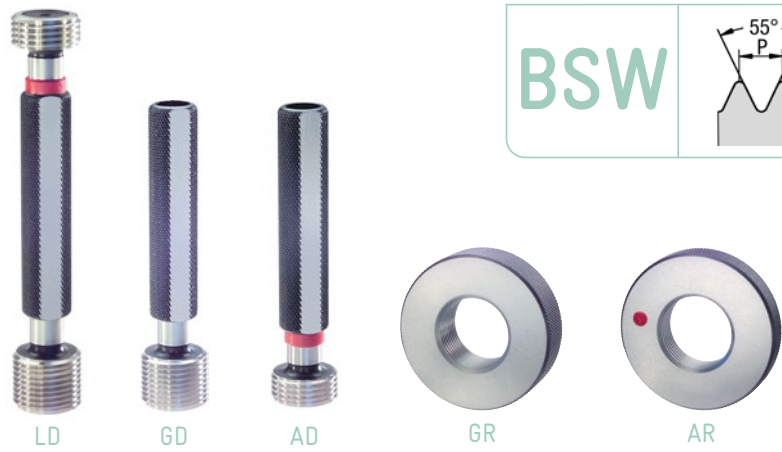
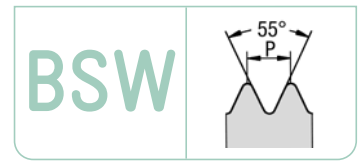
Whitworth pipe thread
 DIN EN ISO 228
 Gage dimensions acc.
 DIN EN ISO 228-2
 Gaging up to depth 4 x D,
 max. 80 mm



ORDER-CODE →				MCS		MCN		MCD	
Accuracy of reading				0,5 mm		0,1 mm		0,01 mm	
d	P Gg/1" tpi	Ø d mm	System size	Scale	Vernier	System size	Digital readout incl. inspection certificate		
↓									
				Part #		Part #		Part #	
G 1/8"	28	9,728	20	590079 ●	590262 ●	28	590152 ●		
G 1/4"	19	13,157	25	590036 ●	590263 ●	35	590153 ●		
G 3/8"	19	16,662	28	590080 ●	590264 ●	35	590154 ●		
G 1/2"	14	20,955	36	590032 ●	590265 ●	35	590155 ●		

Precision Thread Gages

British Standard Whitworth thread BS 84 Gage dimensions acc. BS 919-2



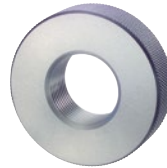
ORDER-CODE →			LD	GD	AD	GR	AR		
d	P Gg/1" tpi	Ø d mm	med. (medium class) Plug gage	med. (medium class) GO plug gage	med. (medium class) NO GO plug gage	med. (medium class) GO ring gage	med. (medium class) NO GO ring gage		
↓									
			Part #	Part #	Part #	Part #	Part #	Part #	
BSW 1/8"	40	3,175	512632 ●			502615 ●	501273 ●		
BSW 3/16"	24	4,763	512641 ●			502626 ●	501280 ●		
BSW 1/4"	20	6,350	512631 ●			502614 ●	501272 ●		
BSW 5/16"	18	7,938	512646 ●			502631 ●	501285 ●		
BSW 3/8"	16	9,525	512644 ●			502629 ●	501283 ●		
BSW 7/16"	14	11,113	512650 ●			502635 ●	501288 ●		
BSW 1/2"	12	12,700	512630 ●			502613 ●	501271 ●		
BSW 9/16"	12	14,288	512653 ●			502640 ●	501293 ●		
BSW 5/8"	11	15,875	512649 ●			502633 ●	501287 ●		
BSW 3/4"	10	19,050	512643 ●			502628 ●	501282 ●		
BSW 7/8"	9	22,225	512652 ●			502638 ●	501291 ●		
BSW 1"	8	25,400	512625 ●			502606 ●	501263 ●		
BSW 1 1/8"	7	28,575	513033 ●			502608 ●	501266 ●		
BSW 1 1/4"	7	31,750	512628 ●			503134 ●	501265 ●		
BSW 1 3/8"	6	34,925	516821 ●			502611 ●	501269 ●		
BSW 1 1/2"	6	38,100	512627 ●			503133 ●	501264 ●		
BSW 1 3/4"	5	44,450		513933 ●	510680 ●	502610 ●	501268 ●		
BSW 2"	4 1/2	50,800		511410 ●	510683 ●	502619 ●	501275 ●		

Precision Thread Gages

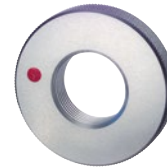
British Standard Whitworth fine thread BS 84 Gage dimensions acc. BS 919-2



LD



GR



AR

ORDER-CODE →			LD	GR	AR			
d	P Gg/1" tpi	Ø d mm	med. (medium class) Plug gage	med. (medium class) GO ring gage	med. (medium class) NO GO ring gage			
↓								
			Part #	Part #	Part #			
BSF 3/16"	32	4,763	513282 ●	540040 ●	520239 ●			
BSF 7/32"	28	5,556	520126 ●	520234 ●	520240 ●			
BSF 1/4"	26	6,350	512529 ●	502498 ●	501168 ●			
BSF 9/32"	26	7,144	520127 ●	520235 ●	520241 ●			
BSF 5/16"	22	7,938	513872 ●	502501 ●	501170 ●			
BSF 3/8"	20	9,525	513553 ●	502500 ●	501169 ●			
BSF 7/16"	18	11,113	518434 ●	520236 ●	520242 ●			
BSF 1/2"	16	12,700	512528 ●	502497 ●	501167 ●			
BSF 9/16"	16	14,288	514907 ●	507251 ●	507252 ●			
BSF 5/8"	14	15,875	520128 ●	520237 ●	520243 ●			
BSF 11/16"	14	17,463	513216 ●	520238 ●	520244 ●			
BSF 3/4"	12	19,050	512530 ●	502499 ●	505546 ●			
BSF 7/8"	11	22,225	516815 ●	540035 ●	540017 ●			
BSF 1"	10	25,400	512527 ●	502496 ●	501166 ●			

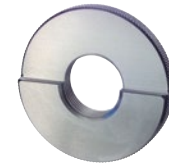
Precision Thread Gages

Tapered Whitworth pipe thread DIN 2999

Where pressure-tight joints are made on the threads
Gage dimensions acc. DIN 2999



LD



LR

ORDER-CODE →		LD-DIN 2999		LR-DIN 2999	
d	P Gg/1" tpi	GO/NO GO plug gage		GO/NO GO ring gage	
↓					
		Part #		Part #	
R 1/8"	28	512517	●	502689	●
R 1/4"	19	512516	●	502688	●
R 3/8"	19	512522	●	502694	●
R 1/2"	14	512515	●	502687	●
R 3/4"	14	512521	●	502693	●
R 1"	11	512512	●	502684	●
R 1 1/4"	11	512514	●	502686	●
R 1 1/2"	11	512513	●	502685	●
R 2"	11	512518	●	502690	●
R 2 1/2"	11	512519	●	502691	●
R 3"	11	512520	●	502692	●
R 4"	11	512523	●	502695	●

Plug gages are marked GLD-Rp DIN 2999:

They are used for gaging DIN 2999, internal parallel thread

Ring gages are marked GLR-R DIN 2999:

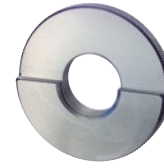
They are used for gaging DIN 2999 external taper thread

Precision Thread Gages

Tapered Whitworth pipe thread ISO 7 and DIN EN 10226
 Where pressure-tight joints are made on the threads
 Gage dimensions acc. ISO 7-2:2000 and DIN EN 10226-3



LD



LR

ORDER-CODE →		LD-ISO 7-2:2000	LR-ISO 7-2:2000
d	P Gg/1" tpi	GO/NO GO plug gage No. 1 DIN EN 10226-3 	GO/NO GO ring gage No. 3 DIN EN 10226-3
↓			
		Part #	Part #
R 1/8"	28	514570 ●	503880 ●
R 1/4"	19	514571 ●	503881 ●
R 3/8"	19	514572 ●	503882 ●
R 1/2"	14	514573 ●	503883 ●
R 3/4"	14	514574 ●	503884 ●
R 1"	11	514575 ●	503885 ●
R 1 1/4"	11	514576 ●	503886 ●
R 1 1/2"	11	514577 ●	503887 ●
R 2"	11	514578 ●	503888 ●
R 2 1/2"	11	514579 ●	503889 ●
R 3"	11	517141 ●	506024 ●
R 4"	11	516167 ●	546002 ●

ISO 7-2:2000 identical with DIN EN 10226-3 are international standard gaging systems and supersede the DIN 2999, ISO 7-2:1982, BS 21, NFE 03-165 and UNI ISO 7-2:1984 systems.

ISO 7-2:2000 and DIN EN 10226-3 plug gages are marked ISO 7 Rc/Rp No. 1:

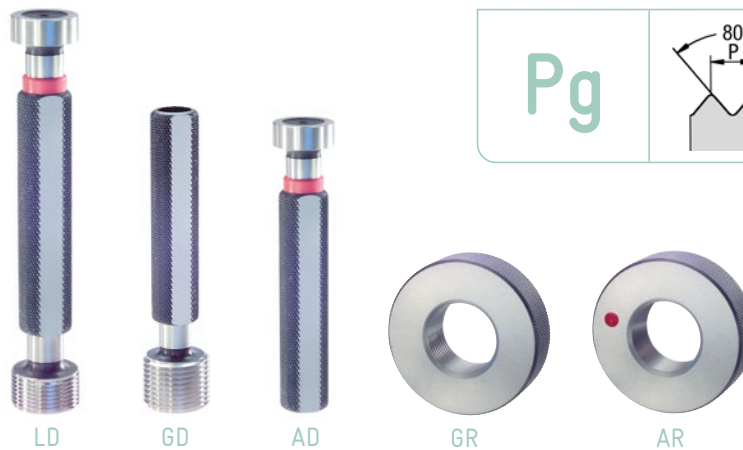
They are used for gaging ISO 7-1 or DIN EN 10226 Rp internal parallel and Rc internal taper thread

ISO 7-2:2000 and DIN EN 10226-3 ring gages are marked ISO 7 R No. 3:

They are used for gaging R ISO 7-1 or DIN EN 10226 external taper thread

Precision Thread Gages

Steel conduit thread DIN 40430 Gage dimensions acc. DIN 40431



ORDER-CODE →			LD	GD	AD	GR	AR	
d	P Gg/1" tpi	Ø d mm	Plug gage	GO plug gage	NO GO plug gage	GO ring gage	NO GO ring gage	
↓								
			Part #	Part #	Part #	Part #	Part #	
Pg 7	20	12,50	512492 ●			502493 ●	501164 ●	
Pg 9	18	15,20	512493 ●			502494 ●	501165 ●	
Pg 11	18	18,60	512484 ●			502485 ●	501156 ●	
Pg 13,5	18	20,40	512485 ●			502486 ●	501157 ●	
Pg 16	18	22,50	512486 ●			502487 ●	501158 ●	
Pg 21	16	28,30	512487 ●			502488 ●	501159 ●	
Pg 29	16	37,00	512488 ●			502489 ●	501160 ●	
Pg 36	16	47,00		511377 ●	510640 ●	502490 ●	501161 ●	
Pg 42	16	54,00		513739 ●	510641 ●	502491 ●	501162 ●	
Pg 48	16	59,30		511378 ●	510642 ●	502492 ●	501163 ●	

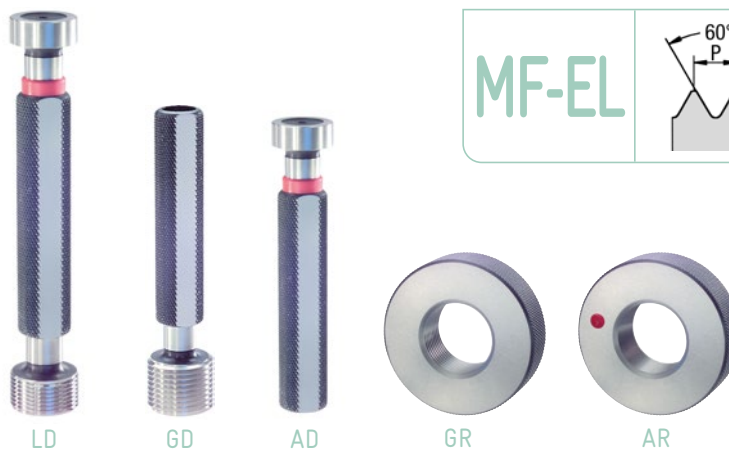
The NO GO plug gage has no thread and checks only the minor diameter.

The NO GO ring gage has no thread and checks only the major diameter.

The steel conduit thread DIN 40430 will be superseded by electrical conduit thread DIN EN 60423.

Precision Thread Gages

Electrical conduit thread DIN EN 60423 Gage dimensions acc. DIN EN 60423



ORDER-CODE →		LD-DIN EN 60423	GD-DIN EN 60423	AD-DIN EN 60423	GR-DIN EN 60423	AR-DIN EN 60423	
d	P mm	7H Plug gage	7H GO plug gage	7H NO GO plug gage plain	8g GO ring gage	8g NO GO ring gage plain	
↓							
		Part #	Part #	Part #	Part #	Part #	
M 8	1	517137 ●			507460 ●	506013 ●	
M 10	1	517138 ●			507461 ●	506014 ●	
M 12	1,5	514557 ●			507462 ●	506015 ●	
M 16	1,5	514558 ●			507463 ●	506016 ●	
M 20	1,5	514559 ●			504884 ●	506017 ●	
M 25	1,5	514560 ●			504885 ●	503871 ●	
M 32	1,5	514561 ●			504886 ●	503872 ●	
M 40	1,5	517139 ●			507464 ●	506018 ●	
M 50	1,5		520134 ●	517140 ●	507465 ●	506019 ●	
M 63	1,5		520135 ●	514562 ●	507466 ●	506020 ●	
M 75	1,5		520136 ●	514563 ●	507467 ●	506021 ●	

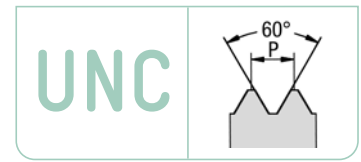
The NO GO plug gage has no thread and checks only the minor diameter.

The NO GO ring gage has no thread and checks only the major diameter.

The electrical conduit thread DIN EN 60423 supersedes the steel conduit thread DIN 40430.

Precision Thread Gages

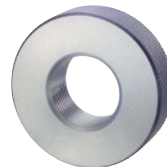
Unified national coarse thread ASME B1.1 Gage dimensions acc. ANSI / ASME B1.2



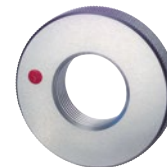
ORDER-CODE →			LD	GD	AD	LD-3B	LD-LH	
d	P Gg/1" tpi	Ø d mm	2B Plug gage	2B GO plug gage	2B NO GO plug gage	3B Plug gage	2B Left Hand left hand Plug gage	
↓								
			Part #	Part #	Part #	Part #	Part #	
UNC Nr. 1	64	1,854	512363 ●			512364 ●	517324 ●	
UNC Nr. 2	56	2,184	512368 ●			512369 ●	517325 ●	
UNC Nr. 3	48	2,515	512373 ●			512374 ●	517326 ●	
UNC Nr. 4	40	2,845	512375 ●			512377 ●	514701 ●	
UNC Nr. 5	40	3,175	512382 ●			512383 ●	517327 ●	
UNC Nr. 6	32	3,505	512384 ●			512386 ●	514702 ●	
UNC Nr. 8	32	4,166	512389 ●			512390 ●	514703 ●	
UNC Nr. 10	24	4,826	512365 ●			512366 ●	514070 ●	
UNC Nr. 12	24	5,486	512367 ●			516808 ●	517328 ●	
UNC 1/4"	20	6,350	512403 ●			512404 ●	512405 ●	
UNC 5/16"	18	7,938	512410 ●			512412 ●	517329 ●	
UNC 3/8"	16	9,525	512408 ●			513092 ●	512409 ●	
UNC 7/16"	14	11,113	512415 ●			512416 ●	517330 ●	
UNC 1/2"	13	12,700	512401 ●			512402 ●	516810 ●	
UNC 9/16"	12	14,288	512419 ●			512420 ●	517331 ●	
UNC 5/8"	11	15,875	512413 ●			512414 ●	517332 ●	
UNC 3/4"	10	19,050	512406 ●			512407 ●	514704 ●	
UNC 7/8"	9	22,225	512417 ●			512418 ●	517333 ●	
UNC 1"	8	25,400	512392 ●			512393 ●	514705 ●	
UNC 1 1/8"	7	28,575	512398 ●				517334 ●	
UNC 1 1/4"	7	31,750	512396 ●				517335 ●	
UNC 1 3/8"	6	34,925	512399 ●				517336 ●	
UNC 1 1/2"	6	38,100	512394 ●				517337 ●	
UNC 1 3/4"	5	44,450		511328 ●	510588 ●			
UNC 2"	4 1/2	50,800		511333 ●	510591 ●			
UNC 2 1/4"	4 1/2	57,150		513180 ●	513179 ●			
UNC 2 1/2"	4	63,500		520137 ●	513618 ●			
UNC 2 3/4"	4	69,850		514464 ●	514465 ●			

Precision Thread Gages

Unified national coarse thread ASME B1.1 Gage dimensions acc. ANSI / ASME B1.2



GR



AR

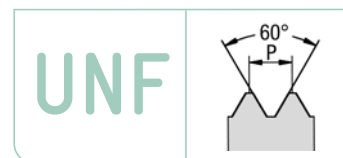
ORDER-CODE →			GR	AR	GR-3A	AR-3A	GR-LH	AR-LH
d	P Gg/1" tpi	Ø d mm	2A GO ring gage	2A NO GO ring gage	3A GO ring gage	3A NO GO ring gage	2A Left Hand left hand GO ring gage	2A Left Hand left hand NO GO ring gage
↓								
			Part #	Part #	Part #	Part #	Part #	Part #
UNC Nr. 1	64	1,854	502377 ●	501051 ●	502378 ●	501052 ●	506400 ●	506412 ●
UNC Nr. 2	56	2,184	502382 ●	501057 ●	502385 ●	501060 ●	506401 ●	506413 ●
UNC Nr. 3	48	2,515	502386 ●	501061 ●	502387 ●	501062 ●	506402 ●	506414 ●
UNC Nr. 4	40	2,845	502388 ●	501063 ●	502391 ●	501065 ●	504041 ●	504045 ●
UNC Nr. 5	40	3,175	502392 ●	501066 ●	502873 ●	502874 ●	506403 ●	506415 ●
UNC Nr. 6	32	3,505	502393 ●	501067 ●	502394 ●	501068 ●	502395 ●	501069 ●
UNC Nr. 8	32	4,166	502396 ●	501070 ●	502397 ●	501071 ●	506404 ●	506416 ●
UNC Nr. 10	24	4,826	502379 ●	501053 ●	502380 ●	501054 ●	503427 ●	503428 ●
UNC Nr. 12	24	5,486	505676 ●	501055 ●	502381 ●	501056 ●	505677 ●	505540 ●
UNC 1/4"	20	6,350	502406 ●	501080 ●	502407 ●	501081 ●	502408 ●	501082 ●
UNC 5/16"	18	7,938	502416 ●	501088 ●	502417 ●	501089 ●	502418 ●	501090 ●
UNC 3/8"	16	9,525	502413 ●	501085 ●	502414 ●	501086 ●	502415 ●	501087 ●
UNC 7/16"	14	11,113	502421 ●	501093 ●	502422 ●	501094 ●	506405 ●	506417 ●
UNC 1/2"	13	12,700	502404 ●	501078 ●	502405 ●	501079 ●	506406 ●	506418 ●
UNC 9/16"	12	14,288	502425 ●	501097 ●	503165 ●	503178 ●	506407 ●	506420 ●
UNC 5/8"	11	15,875	502419 ●	501091 ●	502420 ●	501092 ●	504042 ●	504046 ●
UNC 3/4"	10	19,050	502411 ●	501083 ●	502797 ●	502798 ●	502412 ●	501084 ●
UNC 7/8"	9	22,225	502423 ●	501095 ●	502424 ●	501096 ●	506408 ●	506422 ●
UNC 1"	8	25,400	502398 ●	501072 ●	503166 ●	503179 ●	504043 ●	506423 ●
UNC 1 1/8"	7	28,575	502401 ●	501075 ●			506409 ●	506424 ●
UNC 1 1/4"	7	31,750	502400 ●	501074 ●			505756 ●	506426 ●
UNC 1 3/8"	6	34,925	502403 ●	501077 ●			506410 ●	506428 ●
UNC 1 1/2"	6	38,100	502399 ●	501073 ●			506411 ●	506430 ●
UNC 1 3/4"	5	44,450	502402 ●	501076 ●				
UNC 2"	4 1/2	50,800	502409 ●	503352 ●				
UNC 2 1/4"	4 1/2	57,150	502963 ●	502964 ●				
UNC 2 1/2"	4	63,500	502410 ●	541018 ●				
UNC 2 3/4"	4	69,850	507588 ●	507589 ●				

Precision Thread Gages

Unified national fine thread ASME B1.1 Gage
dimensions acc. ANSI / ASME B1.2



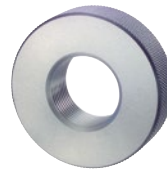
LD



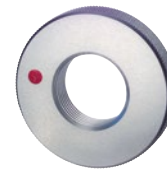
ORDER-CODE →			LD	LD-3B	LD-LH			
d	P Gg/1" tpi	Ø d mm	2B Plug gage	3B Plug gage	2B Left Hand left hand Plug gage			
↓								
			Part #		Part #		Part #	
UNF Nr. 0	80	1,524	512421 ●	512422 ●	517341 ●			
UNF Nr. 1	72	1,854	512424 ●	512425 ●	517342 ●			
UNF Nr. 2	64	2,184	512432 ●	512433 ●	517343 ●			
UNF Nr. 3	56	2,515	512434 ●	512435 ●	517344 ●			
UNF Nr. 4	48	2,845	512436 ●	512437 ●	517345 ●			
UNF Nr. 5	44	3,175	512438 ●	512439 ●	517346 ●			
UNF Nr. 6	40	3,505	512440 ●	512441 ●	517347 ●			
UNF Nr. 8	36	4,166	512442 ●	512443 ●	517348 ●			
UNF Nr. 10	32	4,826	512426 ●	512428 ●	512430 ●			
UNF Nr. 12	28	5,486	512431 ●	516811 ●	517349 ●			
UNF 1/4"	28	6,350	512456 ●	512458 ●	512459 ●			
UNF 5/16"	24	7,938	512466 ●	512467 ●	512468 ●			
UNF 3/8"	24	9,525	512462 ●	512463 ●	512464 ●			
UNF 7/16"	20	11,113	512472 ●	512473 ●	514344 ●			
UNF 1/2"	20	12,700	512454 ●	512455 ●	516996 ●			
UNF 9/16"	18	14,288	512478 ●	512479 ●	512480 ●			
UNF 5/8"	18	15,875	512469 ●	512470 ●	512471 ●			
UNF 3/4"	16	19,050	512460 ●	512461 ●	516813 ●			
UNF 7/8"	14	22,225	512476 ●	512477 ●	513423 ●			
UNF 1"	12	25,400	512444 ●	512445 ●	513491 ●			
UNF 1 1/8"	12	28,575	512451 ●	512452 ●	514147 ●			
UNF 1 1/4"	12	31,750	512449 ●	512450 ●	517350 ●			
UNF 1 3/8"	12	34,925	512453 ●	513533 ●	514709 ●			
UNF 1 1/2"	12	38,100	512446 ●	512448 ●	517351 ●			

Precision Thread Gages

Unified national fine thread ASME B1.1 Gage
dimensions acc. ANSI / ASME B1.2



GR



AR

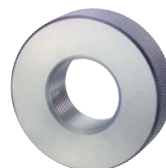
ORDER-CODE →			GR	AR	GR-3A	AR-3A	GR-LH	AR-LH
d	P Gg/1" tpi	Ø d mm	2A GO ring gage	2A NO GO ring gage	3A GO ring gage	3A NO GO ring gage	2A Left Hand left hand GO ring gage	2A Left Hand left hand NO GO ring gage
↓								
			Part #	Part #	Part #	Part #	Part #	Part #
UNF Nr. 0	80	1,524	502426 ●	501099 ●	502427 ●	501100 ●	506438 ●	506458 ●
UNF Nr. 1	72	1,854	502428 ●	501101 ●	502429 ●	501102 ●	506441 ●	506460 ●
UNF Nr. 2	64	2,184	502436 ●	501108 ●	502437 ●	501109 ●	506445 ●	506461 ●
UNF Nr. 3	56	2,515	502438 ●	501110 ●	502439 ●	501111 ●	506448 ●	506462 ●
UNF Nr. 4	48	2,845	502440 ●	501112 ●	502441 ●	501113 ●	506449 ●	506463 ●
UNF Nr. 5	44	3,175	502442 ●	501114 ●	502443 ●	501115 ●	506452 ●	506465 ●
UNF Nr. 6	40	3,505	502444 ●	501116 ●	502445 ●	501117 ●	506453 ●	506466 ●
UNF Nr. 8	36	4,166	502446 ●	501118 ●	502447 ●	501119 ●	506454 ●	506468 ●
UNF Nr. 10	32	4,826	502430 ●	501103 ●	502431 ●	501104 ●	502432 ●	501105 ●
UNF Nr. 12	28	5,486	502433 ●	501106 ●	502435 ●	501107 ●	506455 ●	506470 ●
UNF 1/4"	28	6,350	502458 ●	501130 ●	502459 ●	501131 ●	502460 ●	501132 ●
UNF 5/16"	24	7,938	502469 ●	501140 ●	502470 ●	501141 ●	502471 ●	501142 ●
UNF 3/8"	24	9,525	502466 ●	501137 ●	502467 ●	501138 ●	502468 ●	501139 ●
UNF 7/16"	20	11,113	502475 ●	501146 ●	502476 ●	501147 ●	502477 ●	501148 ●
UNF 1/2"	20	12,700	502455 ●	501127 ●	502456 ●	501128 ●	502457 ●	501129 ●
UNF 9/16"	18	14,288	502481 ●	501152 ●	502482 ●	501153 ●	502483 ●	501154 ●
UNF 5/8"	18	15,875	502472 ●	501143 ●	502473 ●	501144 ●	502474 ●	501145 ●
UNF 3/4"	16	19,050	502461 ●	501133 ●	502463 ●	501134 ●	502464 ●	501135 ●
UNF 7/8"	14	22,225	502478 ●	501149 ●	502479 ●	501150 ●	502480 ●	501151 ●
UNF 1"	12	25,400	502448 ●	501120 ●	502449 ●	501121 ●	502450 ●	501122 ●
UNF 1 1/8"	12	28,575	502453 ●	501125 ●	502757 ●	502758 ●	503127 ●	503126 ●
UNF 1 1/4"	12	31,750	502452 ●	501124 ●	503207 ●	503208 ●	506456 ●	506473 ●
UNF 1 3/8"	12	34,925	502454 ●	501126 ●	503209 ●	503210 ●	506457 ●	506476 ●
UNF 1 1/2"	12	38,100	502451 ●	501123 ●	502768 ●	502767 ●	505736 ●	502851 ●

Precision Thread Gages

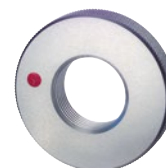
Unified national extra fine thread ASME B1.1 Gage dimensions acc. ANSI / ASME B1.2



LD



GR

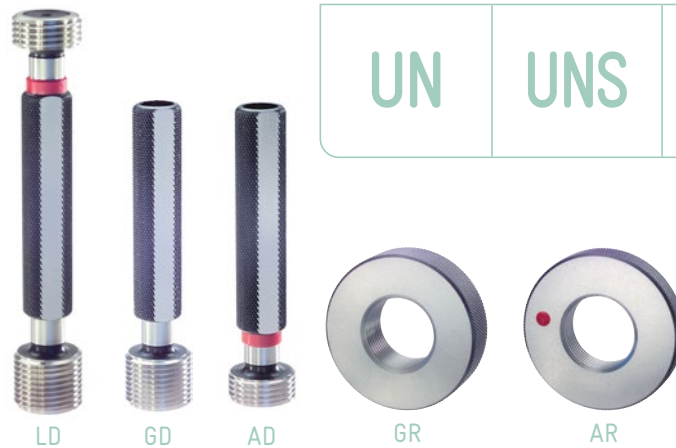


AR

ORDER-CODE →			LD	LD-LH	GR	AR	GR-LH	AR-LH
d	P Gg/1" tpi	Ø d mm	2B Plug gage	2B Left Hand left hand Plug gage	2A GO ring gage	2A NO GO ring gage	2A Left Hand left hand GO ring gage	2A Left Hand left hand NO GO ring gage
↓								
			Part #	Part #	Part #	Part #	Part #	Part #
UNEf Nr. 12	32	5,486	511537 ●	517352 ●	501299 ●	500006 ●	506489 ●	506504 ●
UNEf 1/4"	32	6,350	511550 ●	516900 ●	501313 ●	500019 ●	501315 ●	500021 ●
UNEf 5/16"	32	7,938	511560 ●	517353 ●	501326 ●	500033 ●	506490 ●	506505 ●
UNEf 3/8"	32	9,525	511558 ●	517354 ●	501323 ●	500029 ●	506491 ●	506506 ●
UNEf 7/16"	28	11,113	511565 ●	514710 ●	501329 ●	500036 ●	501332 ●	500038 ●
UNEf 1/2"	28	12,700	511548 ●	517355 ●	501310 ●	500016 ●	503778 ●	503779 ●
UNEf 9/16"	24	14,288	511569 ●	517356 ●	501334 ●	500040 ●	505871 ●	505872 ●
UNEf 5/8"	24	15,875	511562 ●	517357 ●	501327 ●	500034 ●	503138 ●	503137 ●
UNEf 11/16"	24	17,463	511552 ●	517358 ●	501316 ●	500022 ●	506492 ●	506507 ●
UNEf 3/4"	20	19,050	511556 ●	514711 ●	501319 ●	500025 ●	501322 ●	500028 ●
UNEf 13/16"	20	20,638	511554 ●	517359 ●	501317 ●	500023 ●	506493 ●	506508 ●
UNEf 7/8"	20	22,225	511568 ●	517360 ●	501333 ●	500039 ●	506494 ●	506509 ●
UNEf 15/16"	20	23,813	511555 ●	517361 ●	501318 ●	500024 ●	506495 ●	506510 ●
UNEf 1"	20	25,400	511539 ●	517362 ●	501300 ●	500007 ●	504056 ●	504057 ●
UNEf 1 1/16"	18	26,988	511543 ●		501305 ●	500011 ●		
UNEf 1 1/8"	18	28,575	511542 ●		501303 ●	505428 ●		
UNEf 1 3/16"	18	30,163	511545 ●		501307 ●	500013 ●		
UNEf 1 1/4"	18	31,750	511541 ●		501302 ●	500009 ●		
UNEf 1 5/16"	18	33,338	511546 ●		501308 ●	500014 ●		
UNEf 1 3/8"	18	34,925	511544 ●		501306 ●	500012 ●		
UNEf 1 7/16"	18	36,513	511547 ●		501309 ●	500015 ●		
UNEf 1 1/2"	18	38,100	511540 ●		501301 ●	500008 ●		
UNEf 1 9/16"	18	39,688	514880 ●		506769 ●	503813 ●		

Precision Thread Gages

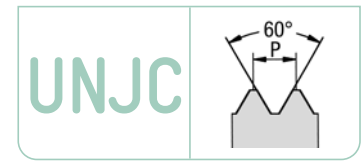
Unified national thread, Unified national special thread ASME B 1.1 selection
Gage dimensions acc. ANSI /ASME B1.2



ORDER-CODE →			LD	GD	AD	GR	AR	
d	P Gg/1" tpi	Ø d mm	2B Plug gage	2B GO plug gage	2B NO GO plug gage	2A GO ring gage	2A NO GO ring gage	
↓	↓							
			Part #	Part #	Part #	Part #	Part #	
UNS 1/4"	36	6,350	512599 ●			502570 ●	501232 ●	
UN 1"	32	25,400	512583 ●			502546 ●	501205 ●	
UN 11/16"	16	17,463	512603 ●			502576 ●	501237 ●	
UN 13/16"	16	20,638	512604 ●			502580 ●	501240 ●	
UN 7/8"	16	22,225	512618 ●			502601 ●	501259 ●	
UN 1"	16	25,400	513082 ●			502545 ●	501204 ●	
UN 1 1/16"	16	26,988	514092 ●			542688 ●	540054 ●	
UN 1 3/16"	16	30,163	512593 ●			502561 ●	501223 ●	
UNS 1"	14	25,400	512580 ●			505372 ●	501202 ●	
UN 1 1/16"	12	26,988	512588 ●			502552 ●	501214 ●	
UN 1 3/16"	12	30,163	512592 ●			502560 ●	501222 ●	
UN 1 5/16"	12	33,338	512594 ●			502563 ●	501225 ●	
UN 1 5/8"	12	41,275		511394 ●	510663 ●	502562 ●	502756 ●	
UN 1 3/4"	12	44,450		513514 ●	513513 ●	502554 ●	501216 ●	
UN 1 7/8"	12	47,625		511396 ●	510666 ●	502565 ●	501227 ●	
UN 2"	12	50,800		513044 ●	513045 ●	502584 ●	502835 ●	
UN 1 1/8"	8	28,575	512586 ●			503417 ●	501213 ●	
UN 1 1/4"	8	31,750	512585 ●			502549 ●	501209 ●	
UN 1 3/8"	8	34,925	512591 ●			552099 ●	501221 ●	
UN 1 1/2"	8	38,100	512584 ●			502547 ●	501207 ●	
UN 1 5/8"	8	41,275		514511 ●	514512 ●	502924 ●	501224 ●	
UN 1 3/4"	8	44,450		511392 ●	510661 ●	502556 ●	501218 ●	
UN 2"	8	50,800		511399 ●	510670 ●	503356 ●	503355 ●	

Precision Thread Gages

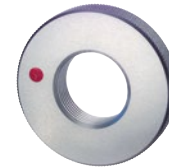
UNJC Unified national coarse thread ISO 3161, ASME B1.15
Gage dimensions acc. ANSI / ASME B1.2



LD



GR

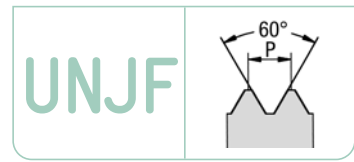


AR

ORDER-CODE →			LD	GR	AR			
d	P Gg/1" tpi	Ø d mm	3B Plug gage	3A GO ring gage	3A NO GO ring gage			
↓								
			Part #	Part #	Part #			
UNJC Nr. 2	56	2,184	514228 ●	504210 ●	504211 ●			
UNJC Nr. 4	40	2,845	511603 ●	503593 ●	503594 ●			
UNJC Nr. 6	32	3,505	511604 ●	505569 ●	500119 ●			
UNJC Nr. 8	32	4,166	511605 ●	501415 ●	500120 ●			
UNJC Nr. 10	24	4,826	514625 ●	547026 ●	544018 ●			
UNJC 1/4"	20	6,350	518292 ●	547027 ●	544019 ●			
UNJC 5/16"	18	7,938	516556 ●	547028 ●	544020 ●			
UNJC 3/8"	16	9,525	515276 ●	507449 ●	544021 ●			
UNJC 7/16"	14	11,113	515969 ●	554996 ●	554997 ●			

Precision Thread Gages

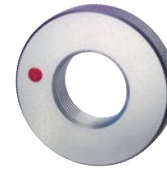
UNJF Unified national fine thread ISO 3161 / ASME B1.15
Gage dimensions acc. ANSI / ASME B1.2



LD



GR



AR

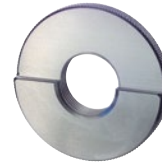
ORDER-CODE			LD	GR	AR	LD-LH	GR-LH	AR-LH
d	P Gg/1" tpi	Ø d mm	3B Plug gage	3A GO ring gage	3A NO GO ring gage	3B Left Hand left hand Plug gage	2A Left Hand left hand GO ring gage	2A Left Hand left hand NO GO ring gage
↓								
			Part #	Part #	Part #	Part #	Part #	Part #
UNJF Nr. 4	48	2,845	514760 ●	547029 ●	544022 ●			
UNJF Nr. 6	40	3,505	518725 ●	505347 ●	505348 ●			
UNJF Nr. 8	36	4,166	514327 ●	501418 ●	500123 ●			
UNJF Nr. 10	32	4,826	511606 ●	501417 ●	500122 ●			
UNJF Nr. 12	28	5,486	517771 ●	504244 ●	504245 ●			
UNJF 1/4"	28	6,350	511609 ●	501419 ●	500125 ●	516765 ●	547575 ●	544318 ●
UNJF 5/16"	24	7,938	511612 ●	501422 ●	500127 ●	511613 ●	504250 ●	504653 ●
UNJF 3/8"	24	9,525	511611 ●	501421 ●	500126 ●	520938 ●	503866 ●	503867 ●
UNJF 7/16"	20	11,113	511615 ●	501424 ●	500129 ●			
UNJF 1/2"	20	12,700	511608 ●	502986 ●	502985 ●	513270 ●	547590 ●	544329 ●
UNJF 9/16"	18	14,288	511617 ●	501425 ●	500130 ●			
UNJF 5/8"	18	15,875	511614 ●	501423 ●	500128 ●			
UNJF 3/4"	16	19,050	511610 ●	501420 ●	503100 ●	514326 ●	503728 ●	503729 ●
UNJF 7/8"	14	22,225	511616 ●	503651 ●	503652 ●			
UNJF 1"	12	25,400	511607 ●	503703 ●	500124 ●			

Precision Thread Gages

American Standard taper pipe thread ASME B1.20.1
 Taper 1:16
 For threads used with jointing compound
 Gage dimensions acc. ASME B1.20.1*



LD



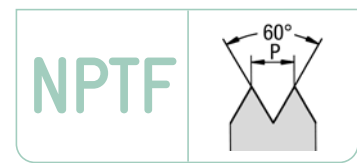
LR

ORDER-CODE	→	LD	LR
d	P Gg/1" tpi	(L1) GO/NO GO plug gage	(L1) GO/NO GO ring gage
↓			
		Part #	Part #
NPT 1/16"	27	512502 ●	502671 ●
NPT 1/8"	27	512505 ●	502675 ●
NPT 1/4"	18	512504 ●	502673 ●
NPT 3/8"	18	512510 ●	502681 ●
NPT 1/2"	14	512503 ●	502672 ●
NPT 3/4"	14	512509 ●	502680 ●
NPT 1"	11,5	512499 ●	502668 ●
NPT 1 1/4"	11,5	512501 ●	502670 ●
NPT 1 1/2"	11,5	512500 ●	502669 ●
NPT 2"	11,5	512506 ●	502677 ●
NPT 2 1/2"	8	512507 ●	502678 ●
NPT 3"	8	512508 ●	502679 ●
NPT 3 1/2"	8	522600 ●	542056 ●
NPT 4"	8	512511 ●	502683 ●

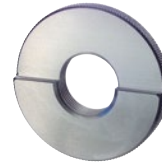
*2-step design with GO and NO GO step
 Additional thread gages for comprehensive gaging on request

Precision Thread Gages

American Standard taper pipe thread ANSI B1.20.3
 Taper 1:16
 For threads used without jointing compound
 Gage dimensions acc. ASA B2.2



LD



LR

ORDER-CODE →		LD	LR
d	P Gg/1" tpi	(L1) GO/NO GO plug gage	(L1) GO/NO GO ring gage
↓			
		Part #	Part #
NPTF 1/16"	27	512542 ●	505811 ●
NPTF 1/8"	27	512545 ●	502700 ●
NPTF 1/4"	18	512544 ●	502699 ●
NPTF 3/8"	18	512547 ●	502702 ●
NPTF 1/2"	14	512543 ●	502698 ●
NPTF 3/4"	14	512546 ●	502701 ●
NPTF 1"	11,5	512539 ●	502697 ●
NPTF 1 1/4"	11,5	512541 ●	503479 ●
NPTF 1 1/2"	11,5	512540 ●	503480 ●
NPTF 2"	11,5	513622 ●	505713 ●
NPTF 2 1/2"	8	517008 ●	505885 ●
NPTF 3"	8	517007 ●	505886 ●

Standard gages are of type L1 with GO and NO GO step

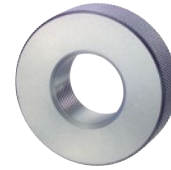
Plug gages L3 and ring gages L2 on request

Precision Thread Gages

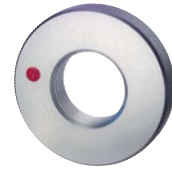
ISO metric trapezoidal thread DIN 103
Gage dimensions acc. DIN 103-9



LD



GR



AR

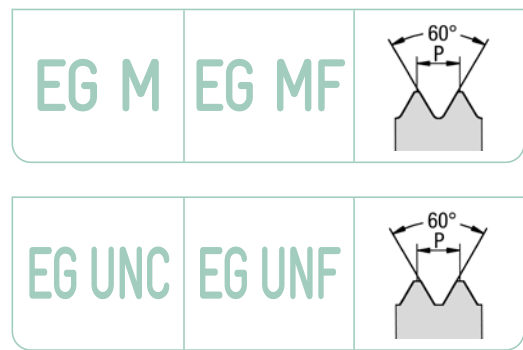
ORDER-CODE →		LD	GR	AR
d	P mm	7H Plug gage	7e GO ring gage	7e NO GO ring gage
↓	↓			
		Part #	Part #	Part #
Tr 8	1,5	515056 ●	502538 ●	501198 ●
Tr 10	2	512549 ●	502508 ●	501177 ●
Tr 11	2	514745 ●	502510 ●	501179 ●
Tr 12	3	512554 ●	502512 ●	503037 ●
Tr 14	3	512557 ●	502515 ●	503435 ●
Tr 16	4	512559 ●	502517 ●	501185 ●
Tr 18	4	512561 ●	503375 ●	501187 ●
Tr 20	4	512563 ●	502521 ●	501188 ●
Tr 22	5	512565 ●	502523 ●	501189 ●
Tr 24	5	512566 ●	502525 ●	501191 ●
Tr 26	5	512569 ●	502527 ●	501193 ●
Tr 28	5	512570 ●	503465 ●	503466 ●
Tr 30	6	512571 ●	502531 ●	502742 ●
Tr 32	6	512572 ●	502825 ●	502826 ●

Precision Thread Gages

Threads for wire inserts (STI)
 EG ISO metric thread DIN 8140-2
 Gage dimensions acc. DIN ISO 1502
 EG UNC thread acc. factory standard
 EG UNF thread acc. factory standard



LD



ORDER-CODE →		LD		ORDER-CODE →		LD		LD-3B	
d	P mm	6H mod Grenzlehrdorn Plug gage		d	P Gg/1" tpi	2B Plug gage	3B Plug gage		
↓				↓					
		Part #				Part #		Part #	
EG M 2	0,4	512675	●	EG UNC Nr. 2	56	512689	●		
EG M 2,5	0,45	512676	●	EG UNC Nr. 4	40	512692	●	512693	●
EG M 3	0,5	512679	●	EG UNC Nr. 5	40	512694	●		
EG M 4	0,7	512682	●	EG UNC Nr. 6	32	512695	●	512696	●
EG M 5	0,8	512683	●	EG UNC Nr. 8	32	512697	●	512698	●
EG M 6	1	512685	●	EG UNC Nr. 10	24	512687	●		
EG M 7	1	513473	●	EG UNC Nr. 12	24	512688	●		
EG M 8	1,25	512686	●	EG UNC 1/4"	20	512700	●		
EG M 10	1,5	512666	●	EG UNC 5/16"	18	512703	●		
EG M 12	1,75	512668	●	EG UNC 3/8"	16	512702	●		
EG M 14	2	512671	●	EG UNC 1/2"	13	512699	●		
EG M 16	2	512673	●	EG UNC 5/8"	11	512704	●		
EG M 18	2,5	512674	●						
EG M 20	2,5	512677	●	EG UNF Nr. 4	48	513095	●		
EG M 24	3	513023	●	EG UNF Nr. 6	40	512707	●		
	↓			EG UNF Nr. 8	36	512709	●		
EG M 8	1	513019	●	EG UNF Nr. 10	32	512705	●	512706	●
EG M 10	1	513020	●	EG UNF 1/4"	28	512712	●	512713	●
EG M 10	1,25	515046	●	EG UNF 5/16"	24	512716	●	512717	●
EG M 12	1,25	515572	●	EG UNF 3/8"	24	512715	●		
EG M 12	1,5	512670	●	EG UNF 7/16"	20	513343	●		
EG M 14	1,5	512672	●	EG UNF 1/2"	20	512711	●		
EG M 16	1,5	513021	●	EG UNF 5/8"	18	512718	●		
EG M 18	1,5	513975	●						
EG M 20	1,5	512678	●						
EG M 22	1,5	513454	●						
EG M 24	1,5	513146	●						

Threads for wire thread inserts are gauged before the insert is screwed in

